

Plate Display

	1	2	3	4	5	6	7	8	9	10	11	12
G												
H												

Quantification

Step #: 3

Analysis Mode: Fluorophore

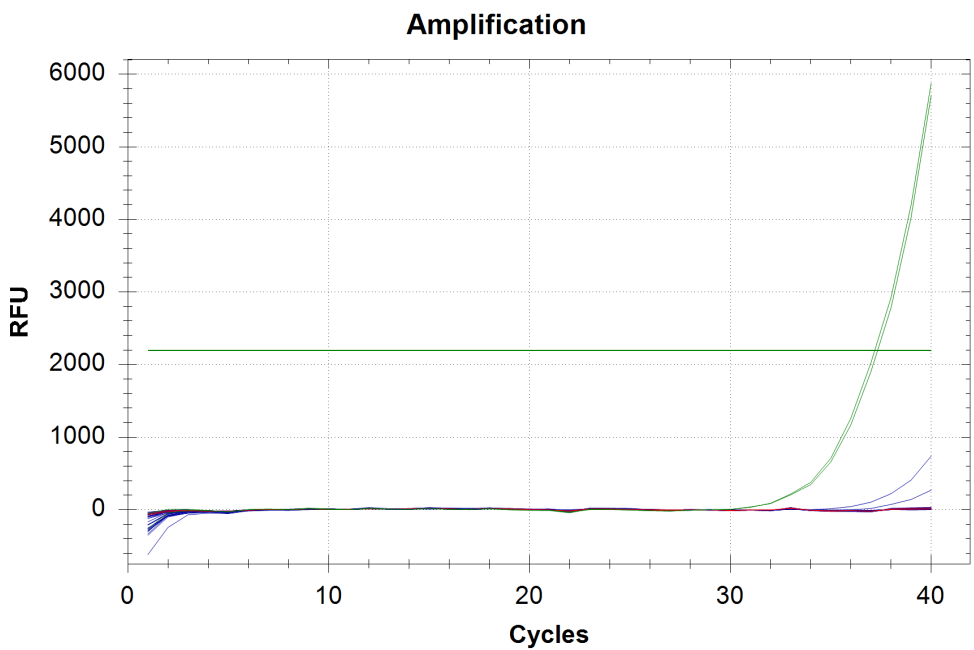
Cq Determination: Single Threshold

Baseline Method:

SYBR: Auto Calculated

Threshold Setting:

SYBR: 2194.94, Auto Calculated



Quantification Data

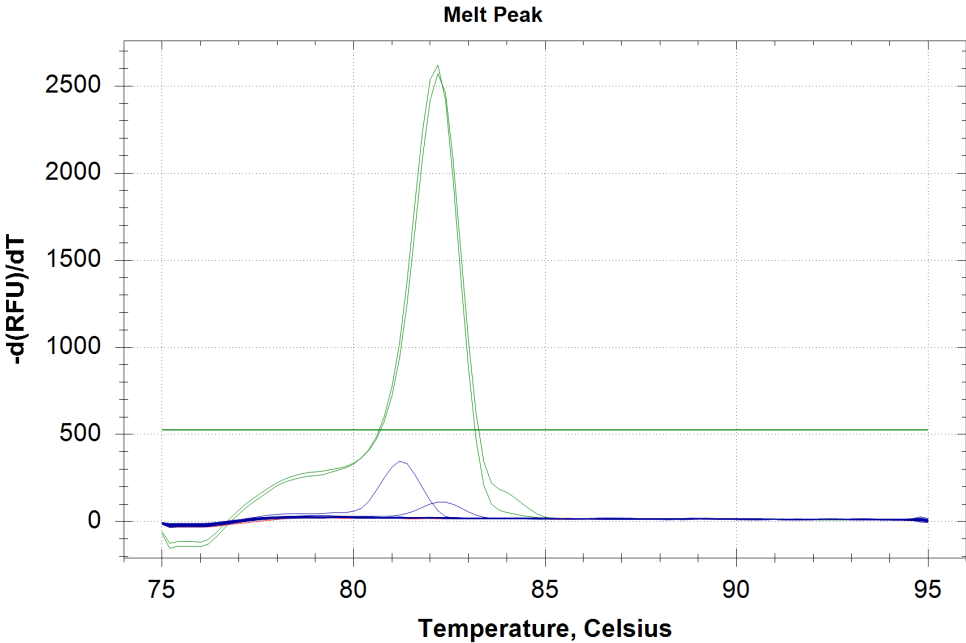
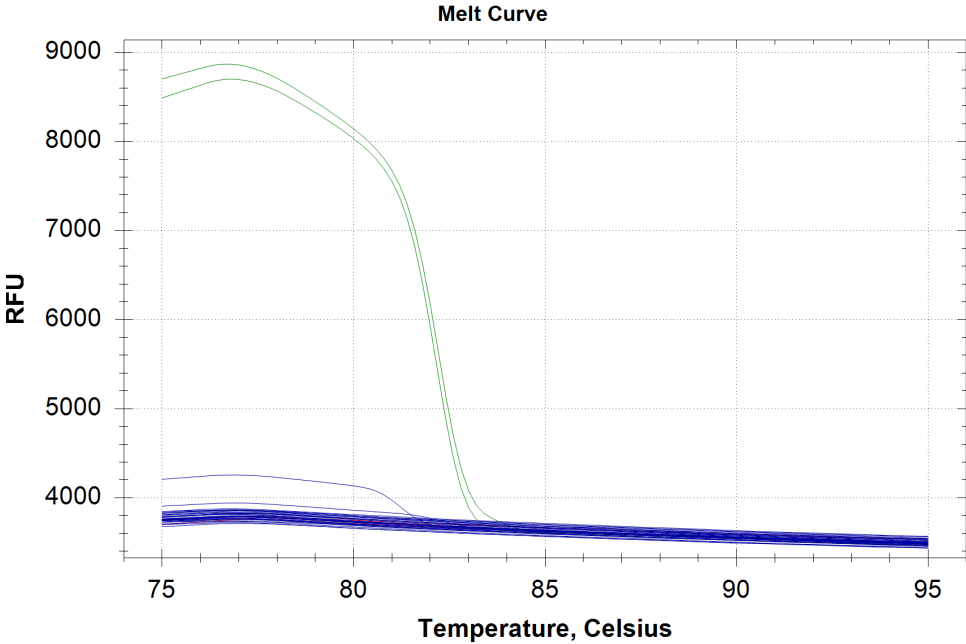
Well	Fluor	Target	Content	Sample	Cq	Cq Mean	Cq Std. Dev
A01	SYBR	EF1	Unkn-01	D01-C DNased	N/A	0.00	0.000
A02	SYBR	EF1	Unkn-01	D01-C DNased	N/A	0.00	0.000
A03	SYBR	EF1	Unkn-02	D02-C DNased	N/A	0.00	0.000
A04	SYBR	EF1	Unkn-02	D02-C DNased	N/A	0.00	0.000
A05	SYBR	EF1	Unkn-03	D09-C DNased	N/A	0.00	0.000
A06	SYBR	EF1	Unkn-03	D09-C DNased	N/A	0.00	0.000
A07	SYBR	EF1	Unkn-04	D10-C DNased	N/A	0.00	0.000
A08	SYBR	EF1	Unkn-04	D10-C DNased	N/A	0.00	0.000

Quantification Data

Well	Fluor	Target	Content	Sample	Cq	Cq Mean	Cq Std. Dev
A09	SYBR	EF1	Unkn-05	D11-C DNased	N/A	0.00	0.000
A10	SYBR	EF1	Unkn-05	D11-C DNased	N/A	0.00	0.000
A11	SYBR	EF1	Unkn-06	D12-C DNased	N/A	0.00	0.000
A12	SYBR	EF1	Unkn-06	D12-C DNased	N/A	0.00	0.000
B01	SYBR	EF1	Unkn-07	D19-C DNased	N/A	0.00	0.000
B02	SYBR	EF1	Unkn-07	D19-C DNased	N/A	0.00	0.000
B03	SYBR	EF1	Unkn-08	D20-C DNased	N/A	0.00	0.000
B04	SYBR	EF1	Unkn-08	D20-C DNased	N/A	0.00	0.000
B05	SYBR	EF1	Unkn-09	T01-C DNased	N/A	0.00	0.000
B06	SYBR	EF1	Unkn-09	T01-C DNased	N/A	0.00	0.000
B07	SYBR	EF1	Unkn-10	T02-C DNased	N/A	0.00	0.000
B08	SYBR	EF1	Unkn-10	T02-C DNased	N/A	0.00	0.000
B09	SYBR	EF1	Unkn-11	T09-C DNased	N/A	0.00	0.000
B10	SYBR	EF1	Unkn-11	T09-C DNased	N/A	0.00	0.000
B11	SYBR	EF1	Unkn-12	T10-C DNased	N/A	0.00	0.000
B12	SYBR	EF1	Unkn-12	T10-C DNased	N/A	0.00	0.000
C01	SYBR	EF1	Unkn-13	T11-C DNased	N/A	0.00	0.000
C02	SYBR	EF1	Unkn-13	T11-C DNased	N/A	0.00	0.000
C03	SYBR	EF1	Unkn-14	T12-C DNased	N/A	0.00	0.000
C04	SYBR	EF1	Unkn-14	T12-C DNased	N/A	0.00	0.000
C05	SYBR	EF1	Unkn-15	T19-C DNased	N/A	0.00	0.000
C06	SYBR	EF1	Unkn-15	T19-C DNased	N/A	0.00	0.000
C07	SYBR	EF1	Unkn-16	T20-C DNased	N/A	0.00	0.000
C08	SYBR	EF1	Unkn-16	T20-C DNased	N/A	0.00	0.000
C09	SYBR	EF1	NTC-01		N/A	0.00	0.000
C10	SYBR	EF1	NTC-01		N/A	0.00	0.000
C11	SYBR	EF1	Pos Ctrl-01	BB16 gDNA	37.33	37.26	0.102
C12	SYBR	EF1	Pos Ctrl-01	BB16 gDNA	37.19	37.26	0.102

Melt Curve

Step #: 5



Melt Curve Data

Well	Fluor	Target	Content	Sample	Melt Temp
A01	SYBR	EF1	Unkn-01	D01-C DNased	None
A02	SYBR	EF1	Unkn-01	D01-C DNased	None

Melt Curve Data

Well	Fluor	Target	Content	Sample	Melt Temp
A03	SYBR	EF1	Unkn-02	D02-C DNased	None
A04	SYBR	EF1	Unkn-02	D02-C DNased	None
A05	SYBR	EF1	Unkn-03	D09-C DNased	None
A06	SYBR	EF1	Unkn-03	D09-C DNased	None
A07	SYBR	EF1	Unkn-04	D10-C DNased	None
A08	SYBR	EF1	Unkn-04	D10-C DNased	None
A09	SYBR	EF1	Unkn-05	D11-C DNased	None
A10	SYBR	EF1	Unkn-05	D11-C DNased	None
A11	SYBR	EF1	Unkn-06	D12-C DNased	None
A12	SYBR	EF1	Unkn-06	D12-C DNased	None
B01	SYBR	EF1	Unkn-07	D19-C DNased	None
B02	SYBR	EF1	Unkn-07	D19-C DNased	None
B03	SYBR	EF1	Unkn-08	D20-C DNased	None
B04	SYBR	EF1	Unkn-08	D20-C DNased	None
B05	SYBR	EF1	Unkn-09	T01-C DNased	None
B06	SYBR	EF1	Unkn-09	T01-C DNased	None
B07	SYBR	EF1	Unkn-10	T02-C DNased	None
B08	SYBR	EF1	Unkn-10	T02-C DNased	None
B09	SYBR	EF1	Unkn-11	T09-C DNased	None
B10	SYBR	EF1	Unkn-11	T09-C DNased	None
B11	SYBR	EF1	Unkn-12	T10-C DNased	None
B12	SYBR	EF1	Unkn-12	T10-C DNased	None
C01	SYBR	EF1	Unkn-13	T11-C DNased	None
C02	SYBR	EF1	Unkn-13	T11-C DNased	None
C03	SYBR	EF1	Unkn-14	T12-C DNased	None
C04	SYBR	EF1	Unkn-14	T12-C DNased	None
C05	SYBR	EF1	Unkn-15	T19-C DNased	None
C06	SYBR	EF1	Unkn-15	T19-C DNased	None
C07	SYBR	EF1	Unkn-16	T20-C DNased	None

Melt Curve Data

Well	Fluor	Target	Content	Sample	Melt Temp
C08	SYBR	EF1	Unkn-16	T20-C DNased	None
C09	SYBR	EF1	NTC-01		None
C10	SYBR	EF1	NTC-01		None
C11	SYBR	EF1	Pos Ctrl-01	BB16 gDNA	82.20
C12	SYBR	EF1	Pos Ctrl-01	BB16 gDNA	82.20

QC Parameters

Data

Description	Value	Use	Results	Exclude Wells	All excluded wells
Negative control with a Cq less than	38	True		False	
NTC with a Cq less than	38	True		False	
NRT with a Cq less than	38	True		False	
Positive control with a Cq greater than	30	True	SYBR:C11, C12.	False	
Unknown without a Cq	N/A	True	SYBR:A1, A2, A3, A4, A5, A6, A7, A8, A9, A10, A11, A12, B1, B2, B3, B4, B5, B6, B7, B8, B9, B10, B11, B12, C1, C2, C3, C4, C5, C6, C7, C8.	False	
Standard without a Cq	N/A	True		False	
Efficiency greater than	110.0	True			
Efficiency less than	90.0	True			
Std Curve R ² less than	0.980	True			
Replicate group Cq Std Dev greater than	0.20	True		False	