



# sam\_2018-10-18 10-03-33\_BR006896\_DNMT1.pcrd

10/18/2018 13:24

## Report Information

User: BioRad/sam

Data File Name: sam\_2018-10-18 10-03-33\_BR006896\_DNMT1.pcrd

Data File Path: \\owl.fish.washington.edu\web\scaphapoda\qPCR\_data\cfx\_connect\_data

Well Group Name: All Wells

Report Differs from Last Save: No

## Run Setup

### Run Information

Run Date: 10/18/2018 10:03

Run User: sam

Run Type: User-defined

Plate File: 20181018\_gigas\_cDNA.pltd

ID:

Notes:

Sample Volume: 20

Temperature Control Mode: Calculated

Lid Temperature: 105

Base Serial Number: BR006896

Optical Head Serial Number: 788BR07000

### Protocol

1: 98.0°C for 2:00

2: 98.0°C for 0:02

3: 55.0°C for 0:05

Plate Read

4: GOTO 2, 39 more times

5: Melt Curve 75.0°C to 95.0°C: Increment 0.2°C 0:10

Plate Read

### Plate Display

	1	2	3	4	5	6	7	8	9	10	11	12
A	Unk-1 DNMT1 D01-C	Unk-1 DNMT1 D01-C	Unk-2 DNMT1 D02-C	Unk-2 DNMT1 D02-C	Unk-3 DNMT1 D09-C	Unk-3 DNMT1 D09-C	Unk-4 DNMT1 D10-C	Unk-4 DNMT1 D10-C	Unk-5 DNMT1 D11-C	Unk-5 DNMT1 D11-C	Unk-6 DNMT1 D12-C	Unk-6 DNMT1 D12-C
B	Unk-7 DNMT1 D19-C	Unk-7 DNMT1 D19-C	Unk-8 DNMT1 D20-C	Unk-8 DNMT1 D20-C	Unk-9 DNMT1 T01-C	Unk-9 DNMT1 T01-C	Unk-10 DNMT1 T02-C	Unk-10 DNMT1 T02-C	Unk-11 DNMT1 T09-C	Unk-11 DNMT1 T09-C	Unk-12 DNMT1 T10-C	Unk-12 DNMT1 T10-C
C	Unk-13 DNMT1 T11-C	Unk-13 DNMT1 T11-C	Unk-14 DNMT1 T12-C	Unk-14 DNMT1 T12-C	Unk-15 DNMT1 T19-C	Unk-15 DNMT1 T19-C	Unk-16 DNMT1 T20-C	Unk-16 DNMT1 T20-C	NTC-1 DNMT1	NTC-1 DNMT1		
D												
E	*Unk-17 Prx6 D01-C	*Unk-17 Prx6 D01-C	*Unk-18 Prx6 D02-C	*Unk-18 Prx6 D02-C	*Unk-19 Prx6 D09-C	*Unk-19 Prx6 D09-C	*Unk-20 Prx6 D10-C	*Unk-20 Prx6 D10-C	*Unk-21 Prx6 D11-C	*Unk-21 Prx6 D11-C	*Unk-22 Prx6 D12-C	*Unk-22 Prx6 D12-C

## Plate Display

	1	2	3	4	5	6	7	8	9	10	11	12
F	*Unk-23 Prx6 D19-C	*Unk-23 Prx6 D19-C	*Unk-24 Prx6 D20-C	*Unk-24 Prx6 D20-C	*Unk-25 Prx6 T01-C	*Unk-25 Prx6 T01-C	*Unk-26 Prx6 T02-C	*Unk-26 Prx6 T02-C	*Unk-27 Prx6 T09-C	*Unk-27 Prx6 T09-C	*Unk-28 Prx6 T10-C	*Unk-28 Prx6 T10-C
G	*Unk-29 Prx6 T11-C	*Unk-29 Prx6 T11-C	*Unk-30 Prx6 T12-C	*Unk-30 Prx6 T12-C	*Unk-31 Prx6 T19-C	*Unk-31 Prx6 T19-C	*Unk-32 Prx6 T20-C	*Unk-32 Prx6 T20-C	*NTC-2 Prx6	*NTC-2 Prx6		
H												

## Quantification

**Step #: 3**

**Analysis Mode:** Fluorophore

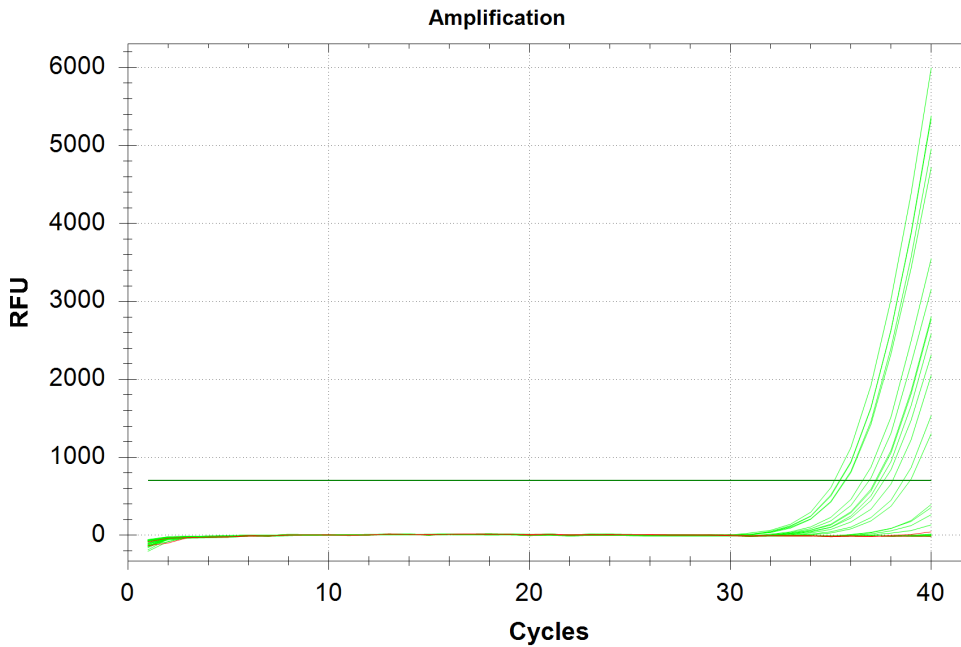
**Cq Determination:** Single Threshold

**Baseline Method:**

SYBR: Auto Calculated

**Threshold Setting:**

SYBR: 703.71, Auto Calculated



## Quantification Data

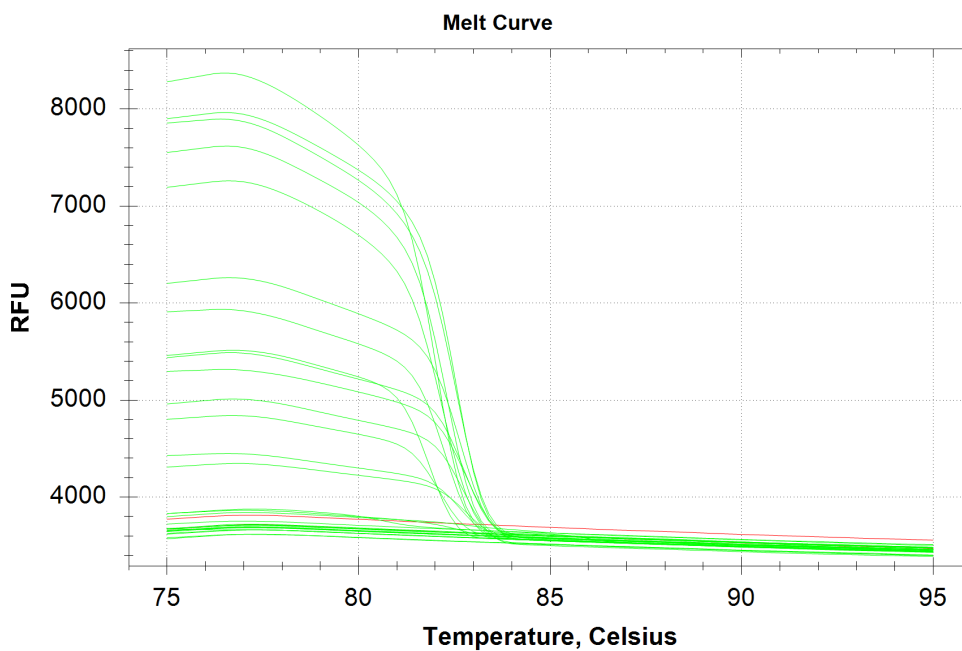
Well	Fluor	Target	Content	Sample	Cq	Cq Mean	Cq Std. Dev
A01	SYBR	DNMT1	Unkn-01	D01-C	35.44	35.44	0.000
A02	SYBR	DNMT1	Unkn-01	D01-C	N/A	0.00	0.000
A03	SYBR	DNMT1	Unkn-02	D02-C	36.91	36.30	0.859
A04	SYBR	DNMT1	Unkn-02	D02-C	35.70	36.30	0.859
A05	SYBR	DNMT1	Unkn-03	D09-C	N/A	0.00	0.000
A06	SYBR	DNMT1	Unkn-03	D09-C	N/A	0.00	0.000
A07	SYBR	DNMT1	Unkn-04	D10-C	N/A	0.00	0.000
A08	SYBR	DNMT1	Unkn-04	D10-C	N/A	0.00	0.000
A09	SYBR	DNMT1	Unkn-05	D11-C	N/A	0.00	0.000
A10	SYBR	DNMT1	Unkn-05	D11-C	N/A	0.00	0.000
A11	SYBR	DNMT1	Unkn-06	D12-C	35.47	36.46	1.400

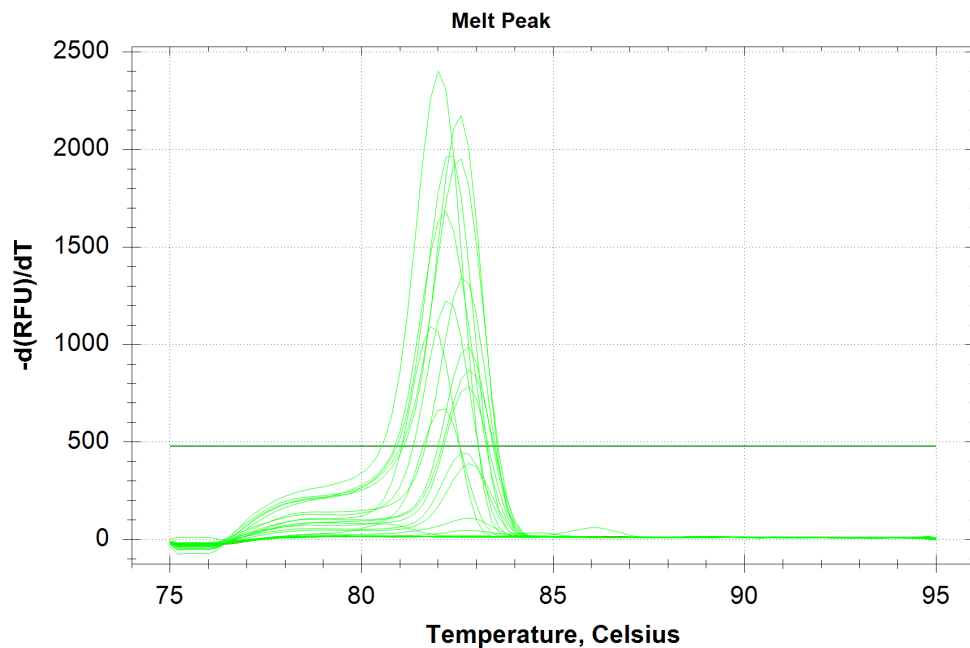
## Quantification Data

Well	Fluor	Target	Content	Sample	Cq	Cq Mean	Cq Std. Dev
A12	SYBR	DNMT1	Unkn-06	D12-C	37.45	36.46	1.400
B01	SYBR	DNMT1	Unkn-07	D19-C	N/A	0.00	0.000
B02	SYBR	DNMT1	Unkn-07	D19-C	N/A	0.00	0.000
B03	SYBR	DNMT1	Unkn-08	D20-C	N/A	0.00	0.000
B04	SYBR	DNMT1	Unkn-08	D20-C	38.95	38.95	0.000
B05	SYBR	DNMT1	Unkn-09	T01-C	N/A	0.00	0.000
B06	SYBR	DNMT1	Unkn-09	T01-C	37.23	37.23	0.000
B07	SYBR	DNMT1	Unkn-10	T02-C	N/A	0.00	0.000
B08	SYBR	DNMT1	Unkn-10	T02-C	N/A	0.00	0.000
B09	SYBR	DNMT1	Unkn-11	T09-C	36.59	36.93	0.487
B10	SYBR	DNMT1	Unkn-11	T09-C	37.28	36.93	0.487
B11	SYBR	DNMT1	Unkn-12	T10-C	N/A	0.00	0.000
B12	SYBR	DNMT1	Unkn-12	T10-C	N/A	0.00	0.000
C01	SYBR	DNMT1	Unkn-13	T11-C	N/A	0.00	0.000
C02	SYBR	DNMT1	Unkn-13	T11-C	N/A	0.00	0.000
C03	SYBR	DNMT1	Unkn-14	T12-C	38.08	38.34	0.371
C04	SYBR	DNMT1	Unkn-14	T12-C	38.61	38.34	0.371
C05	SYBR	DNMT1	Unkn-15	T19-C	35.73	36.69	1.356
C06	SYBR	DNMT1	Unkn-15	T19-C	37.65	36.69	1.356
C07	SYBR	DNMT1	Unkn-16	T20-C	35.18	35.18	0.000
C08	SYBR	DNMT1	Unkn-16	T20-C	N/A	0.00	0.000
C09	SYBR	DNMT1	NTC-01		N/A	0.00	0.000
C10	SYBR	DNMT1	NTC-01		N/A	0.00	0.000

## Melt Curve

Step #: 5





**Melt Curve Data**

Well	Fluor	Target	Content	Sample	Melt Temp
A01	SYBR	DNMT1	Unkn-01	D01-C	82.60
A02	SYBR	DNMT1	Unkn-01	D01-C	None
A03	SYBR	DNMT1	Unkn-02	D02-C	82.20
A04	SYBR	DNMT1	Unkn-02	D02-C	82.40
A05	SYBR	DNMT1	Unkn-03	D09-C	None
A06	SYBR	DNMT1	Unkn-03	D09-C	None
A07	SYBR	DNMT1	Unkn-04	D10-C	None
A08	SYBR	DNMT1	Unkn-04	D10-C	None
A09	SYBR	DNMT1	Unkn-05	D11-C	None
A10	SYBR	DNMT1	Unkn-05	D11-C	None
A11	SYBR	DNMT1	Unkn-06	D12-C	82.60
A12	SYBR	DNMT1	Unkn-06	D12-C	82.80
B01	SYBR	DNMT1	Unkn-07	D19-C	None
B02	SYBR	DNMT1	Unkn-07	D19-C	None
B03	SYBR	DNMT1	Unkn-08	D20-C	None
B04	SYBR	DNMT1	Unkn-08	D20-C	None
B05	SYBR	DNMT1	Unkn-09	T01-C	None
B06	SYBR	DNMT1	Unkn-09	T01-C	81.80
B07	SYBR	DNMT1	Unkn-10	T02-C	None
B08	SYBR	DNMT1	Unkn-10	T02-C	None
B09	SYBR	DNMT1	Unkn-11	T09-C	82.60
B10	SYBR	DNMT1	Unkn-11	T09-C	82.80
B11	SYBR	DNMT1	Unkn-12	T10-C	None
B12	SYBR	DNMT1	Unkn-12	T10-C	None
C01	SYBR	DNMT1	Unkn-13	T11-C	None
C02	SYBR	DNMT1	Unkn-13	T11-C	None
C03	SYBR	DNMT1	Unkn-14	T12-C	82.20
C04	SYBR	DNMT1	Unkn-14	T12-C	None

## Melt Curve Data

Well	Fluor	Target	Content	Sample	Melt Temp
C05	SYBR	DNMT1	Unkn-15	T19-C	82.20
C06	SYBR	DNMT1	Unkn-15	T19-C	82.80
C07	SYBR	DNMT1	Unkn-16	T20-C	82.00
C08	SYBR	DNMT1	Unkn-16	T20-C	None
C09	SYBR	DNMT1	NTC-01		None
C10	SYBR	DNMT1	NTC-01		None

## QC Parameters

### Data

Description	Value	Use	Results	Exclude Wells	All excluded wells
Negative control with a Cq less than	38	True		False	
NTC with a Cq less than	38	True		False	
NRT with a Cq less than	38	True		False	
Positive control with a Cq greater than	30	True		False	
Unknown without a Cq	N/A	True	SYBR:A2, A5, A6, A7, A8, A9, A10, B1, B2, B3, B5, B7, B8, B11, B12, C1, C2, C8.	False	
Standard without a Cq	N/A	True		False	
Efficiency greater than	110.0	True			
Efficiency less than	90.0	True			
Std Curve R <sup>2</sup> less than	0.980	True			
Replicate group Cq Std Dev greater than	0.20	True	SYBR:A3, A4, A11, A12, B9, B10, C3, C4, C5, C6.	False	