



## Plate Display

	1	2	3	4	5	6	7	8	9	10	11	12
G												
H												

## Quantification

Step #: 3

Analysis Mode: Fluorophore

Cq Determination: Single Threshold

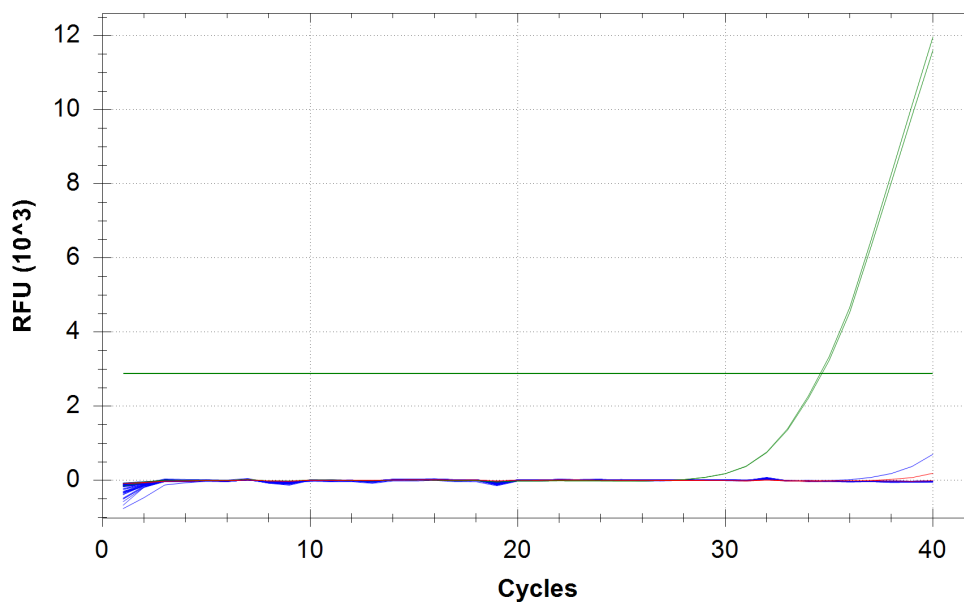
Baseline Method:

SYBR: Auto Calculated

Threshold Setting:

SYBR: 2891.99, Auto Calculated

### Amplification



## Quantification Data

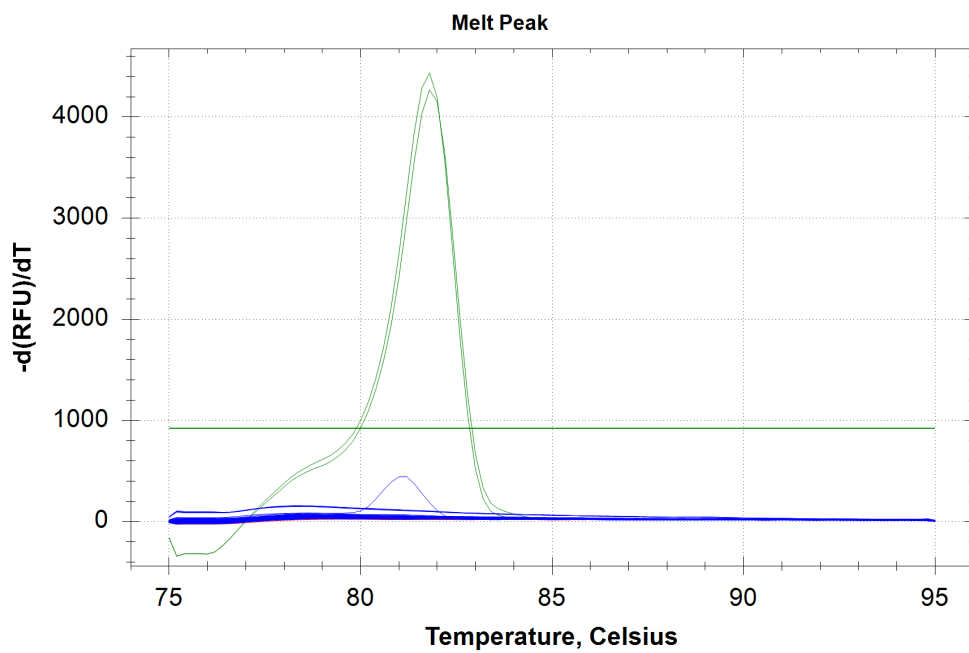
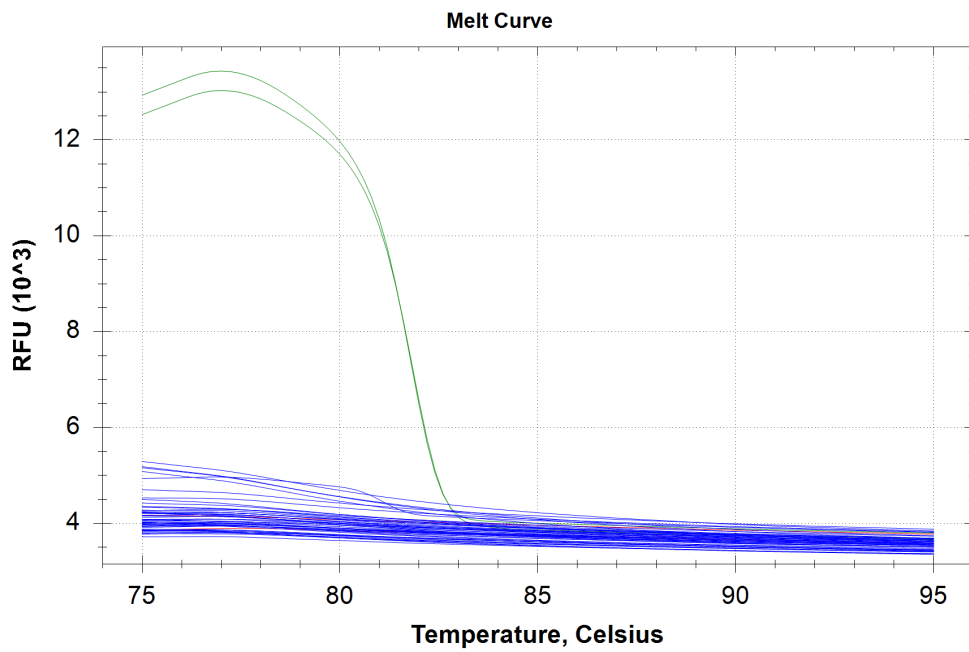
Well	Fluor	Target	Content	Sample	Cq	Cq Mean	Cq Std. Dev
A01	SYBR	EF1	Unkn-01	D03	N/A	0.00	0.000
A02	SYBR	EF1	Unkn-01	D03	N/A	0.00	0.000
A03	SYBR	EF1	Unkn-02	D04	N/A	0.00	0.000
A04	SYBR	EF1	Unkn-02	D04	N/A	0.00	0.000
A05	SYBR	EF1	Unkn-03	D05	N/A	0.00	0.000
A06	SYBR	EF1	Unkn-03	D05	N/A	0.00	0.000
A07	SYBR	EF1	Unkn-04	D06	N/A	0.00	0.000
A08	SYBR	EF1	Unkn-04	D06	N/A	0.00	0.000
A09	SYBR	EF1	Unkn-05	D07	N/A	0.00	0.000
A10	SYBR	EF1	Unkn-05	D07	N/A	0.00	0.000
A11	SYBR	EF1	Unkn-06	D08	N/A	0.00	0.000
A12	SYBR	EF1	Unkn-06	D08	N/A	0.00	0.000
B01	SYBR	EF1	Unkn-07	D13	N/A	0.00	0.000
B02	SYBR	EF1	Unkn-07	D13	N/A	0.00	0.000

## Quantification Data

Well	Fluor	Target	Content	Sample	Cq	Cq Mean	Cq Std. Dev
B03	SYBR	EF1	Unkn-08	D14	N/A	0.00	0.000
B04	SYBR	EF1	Unkn-08	D14	N/A	0.00	0.000
B05	SYBR	EF1	Unkn-09	D15	N/A	0.00	0.000
B06	SYBR	EF1	Unkn-09	D15	N/A	0.00	0.000
B07	SYBR	EF1	Unkn-10	D16	N/A	0.00	0.000
B08	SYBR	EF1	Unkn-10	D16	N/A	0.00	0.000
B09	SYBR	EF1	Unkn-11	D17	N/A	0.00	0.000
B10	SYBR	EF1	Unkn-11	D17	N/A	0.00	0.000
B11	SYBR	EF1	Unkn-12	D18	N/A	0.00	0.000
B12	SYBR	EF1	Unkn-12	D18	N/A	0.00	0.000
C01	SYBR	EF1	Unkn-13	T03	N/A	0.00	0.000
C02	SYBR	EF1	Unkn-13	T03	N/A	0.00	0.000
C03	SYBR	EF1	Unkn-14	T04	N/A	0.00	0.000
C04	SYBR	EF1	Unkn-14	T04	N/A	0.00	0.000
C05	SYBR	EF1	Unkn-15	T05	N/A	0.00	0.000
C06	SYBR	EF1	Unkn-15	T05	N/A	0.00	0.000
C07	SYBR	EF1	Unkn-16	T06	N/A	0.00	0.000
C08	SYBR	EF1	Unkn-16	T06	N/A	0.00	0.000
C09	SYBR	EF1	Unkn-17	T07	N/A	0.00	0.000
C10	SYBR	EF1	Unkn-17	T07	N/A	0.00	0.000
C11	SYBR	EF1	Unkn-18	T08	N/A	0.00	0.000
C12	SYBR	EF1	Unkn-18	T08	N/A	0.00	0.000
D01	SYBR	EF1	Unkn-19	T13	N/A	0.00	0.000
D02	SYBR	EF1	Unkn-19	T13	N/A	0.00	0.000
D03	SYBR	EF1	Unkn-20	T14	N/A	0.00	0.000
D04	SYBR	EF1	Unkn-20	T14	N/A	0.00	0.000
D05	SYBR	EF1	Unkn-21	T15	N/A	0.00	0.000
D06	SYBR	EF1	Unkn-21	T15	N/A	0.00	0.000
D07	SYBR	EF1	Unkn-22	T16	N/A	0.00	0.000
D08	SYBR	EF1	Unkn-22	T16	N/A	0.00	0.000
D09	SYBR	EF1	Unkn-23	T17	N/A	0.00	0.000
D10	SYBR	EF1	Unkn-23	T17	N/A	0.00	0.000
D11	SYBR	EF1	Unkn-24	T18	N/A	0.00	0.000
D12	SYBR	EF1	Unkn-24	T18	N/A	0.00	0.000
E01	SYBR	EF1	Pos Ctrl-01		34.66	34.62	0.059
E02	SYBR	EF1	Pos Ctrl-01		34.58	34.62	0.059
E03	SYBR	EF1	NTC-01		N/A	0.00	0.000
E04	SYBR	EF1	NTC-01		N/A	0.00	0.000

## Melt Curve

Step #: 5



### Melt Curve Data

Well	Fluor	Target	Content	Sample	Melt Temp
A01	SYBR	EF1	Unkn-01	D03	None
A02	SYBR	EF1	Unkn-01	D03	None
A03	SYBR	EF1	Unkn-02	D04	None
A04	SYBR	EF1	Unkn-02	D04	None
A05	SYBR	EF1	Unkn-03	D05	None
A06	SYBR	EF1	Unkn-03	D05	None
A07	SYBR	EF1	Unkn-04	D06	None
A08	SYBR	EF1	Unkn-04	D06	None
A09	SYBR	EF1	Unkn-05	D07	None

## Melt Curve Data

Well	Fluor	Target	Content	Sample	Melt Temp
A10	SYBR	EF1	Unkn-05	D07	None
A11	SYBR	EF1	Unkn-06	D08	None
A12	SYBR	EF1	Unkn-06	D08	None
B01	SYBR	EF1	Unkn-07	D13	None
B02	SYBR	EF1	Unkn-07	D13	None
B03	SYBR	EF1	Unkn-08	D14	None
B04	SYBR	EF1	Unkn-08	D14	None
B05	SYBR	EF1	Unkn-09	D15	None
B06	SYBR	EF1	Unkn-09	D15	None
B07	SYBR	EF1	Unkn-10	D16	None
B08	SYBR	EF1	Unkn-10	D16	None
B09	SYBR	EF1	Unkn-11	D17	None
B10	SYBR	EF1	Unkn-11	D17	None
B11	SYBR	EF1	Unkn-12	D18	None
B12	SYBR	EF1	Unkn-12	D18	None
C01	SYBR	EF1	Unkn-13	T03	None
C02	SYBR	EF1	Unkn-13	T03	None
C03	SYBR	EF1	Unkn-14	T04	None
C04	SYBR	EF1	Unkn-14	T04	None
C05	SYBR	EF1	Unkn-15	T05	None
C06	SYBR	EF1	Unkn-15	T05	None
C07	SYBR	EF1	Unkn-16	T06	None
C08	SYBR	EF1	Unkn-16	T06	None
C09	SYBR	EF1	Unkn-17	T07	None
C10	SYBR	EF1	Unkn-17	T07	None
C11	SYBR	EF1	Unkn-18	T08	None
C12	SYBR	EF1	Unkn-18	T08	None
D01	SYBR	EF1	Unkn-19	T13	None
D02	SYBR	EF1	Unkn-19	T13	None
D03	SYBR	EF1	Unkn-20	T14	None
D04	SYBR	EF1	Unkn-20	T14	None
D05	SYBR	EF1	Unkn-21	T15	None
D06	SYBR	EF1	Unkn-21	T15	None
D07	SYBR	EF1	Unkn-22	T16	None
D08	SYBR	EF1	Unkn-22	T16	None
D09	SYBR	EF1	Unkn-23	T17	None
D10	SYBR	EF1	Unkn-23	T17	None
D11	SYBR	EF1	Unkn-24	T18	None
D12	SYBR	EF1	Unkn-24	T18	None
E01	SYBR	EF1	Pos Ctrl-01		81.80
E02	SYBR	EF1	Pos Ctrl-01		81.80
E03	SYBR	EF1	NTC-01		None
E04	SYBR	EF1	NTC-01		None

## QC Parameters

## Data

Description	Value	Use	Results	Exclude Wells	All excluded wells
Negative control with a Cq less than	38	True		False	
NTC with a Cq less than	38	True		False	
NRT with a Cq less than	38	True		False	
Positive control with a Cq greater than	30	True	SYBR:E1, E2.	False	
Unknown without a Cq	N/A	True	SYBR:A1, A2, A3, A4, A5, A6, A7, A8, A9, A10, A11, A12, B1, B2, B3, B4, B5, B6, B7, B8, B9, B10, B11, B12, C1, C2, C3, C4, C5, C6, C7, C8, C9, C10, C11, C12, D1, D2, D3, D4, D5, D6, D7, D8, D9, D10, D11, D12.	False	
Standard without a Cq	N/A	True		False	
Efficiency greater than	110.0	True			
Efficiency less than	90.0	True			
Std Curve R <sup>2</sup> less than	0.980	True			
Replicate group Cq Std Dev greater than	0.20	True		False	