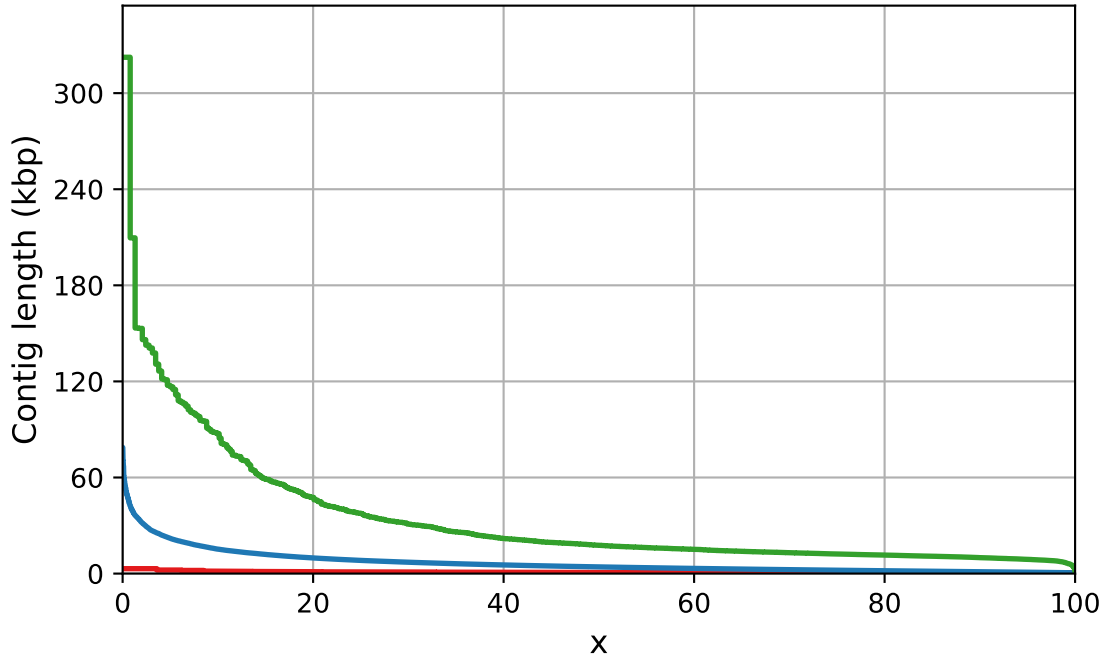


Report

	Oly_Redundans_Output_scaffolds.reduced	Oly_Redundans_Output_Try_2_scaffolds.reduced	20171003_redundans_01_scaffolds.reduced
# contigs (>= 0 bp)	3642	300593	2315
# contigs (>= 1000 bp)	18	137301	2315
# contigs (>= 5000 bp)	0	24009	2282
# contigs (>= 10000 bp)	0	6254	1811
# contigs (>= 25000 bp)	0	586	304
# contigs (>= 50000 bp)	0	36	91
Total length (>= 0 bp)	968128	546928670	40561504
Total length (>= 1000 bp)	25115	476206320	40561504
Total length (>= 5000 bp)	0	220366692	40443936
Total length (>= 10000 bp)	0	99646272	36412694
Total length (>= 25000 bp)	0	19574809	14794719
Total length (>= 50000 bp)	0	2106424	7662042
# contigs	114	188612	2315
Largest contig	3063	78788	322397
Total length	85207	513841258	40561504
GC (%)	36.24	35.90	36.46
N50	682	4175	17679
N75	569	2103	12211
L50	40	32022	573
L75	74	75613	1274
# N's per 100 kbp	17127.70	1019.31	695.24

All statistics are based on contigs of size >= 500 bp, unless otherwise noted (e.g., "# contigs (>= 0 bp)" and "Total length (>= 0 bp)" include all contigs).

Nx

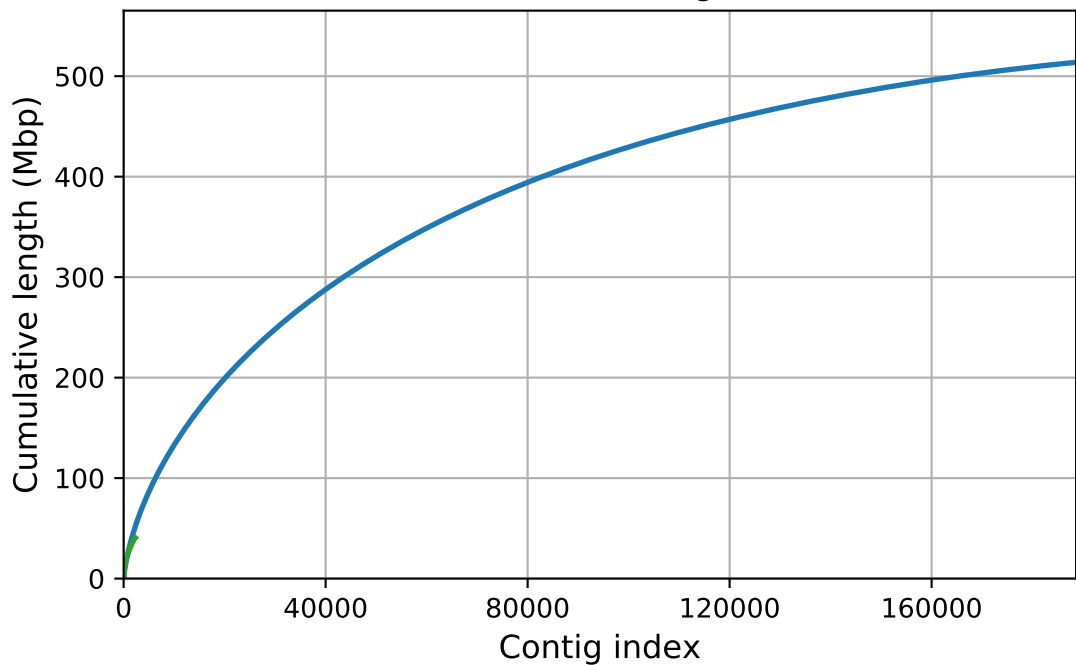


ffolds.reduced

Oly_Redundans_Output_Try_2_scaffolds.reduced

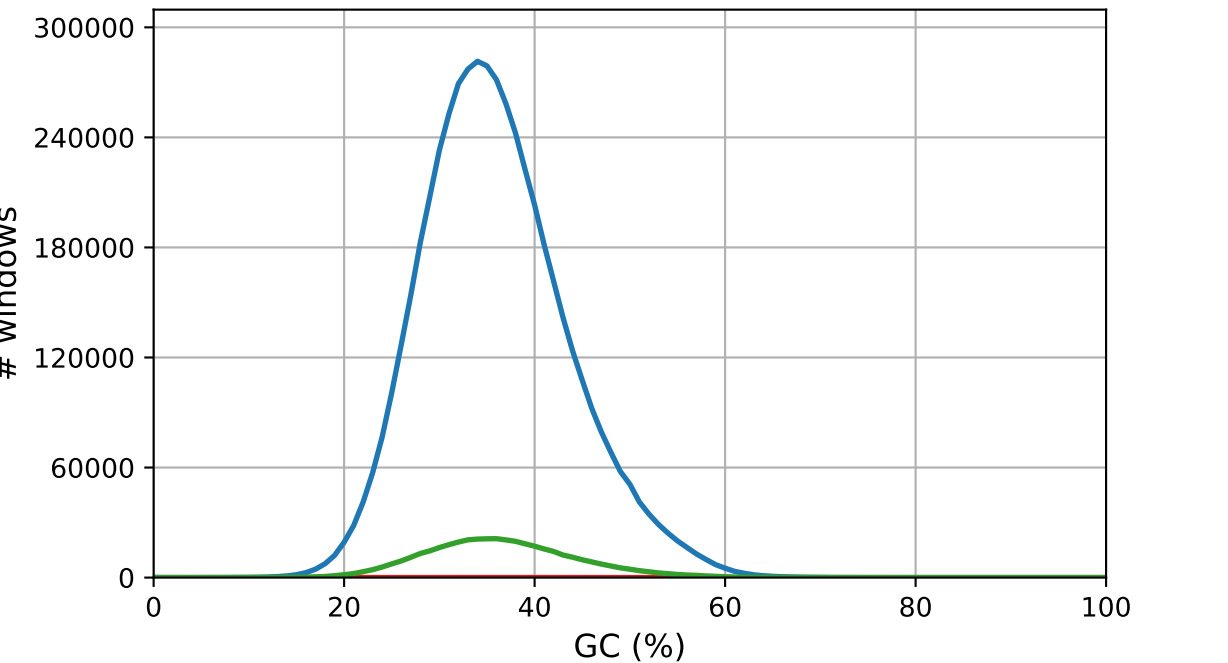
20171003

Cumulative length



ffolds.reduced Oly_Redundans_Output_Try_2_scaffolds.reduced 20171003

GC content

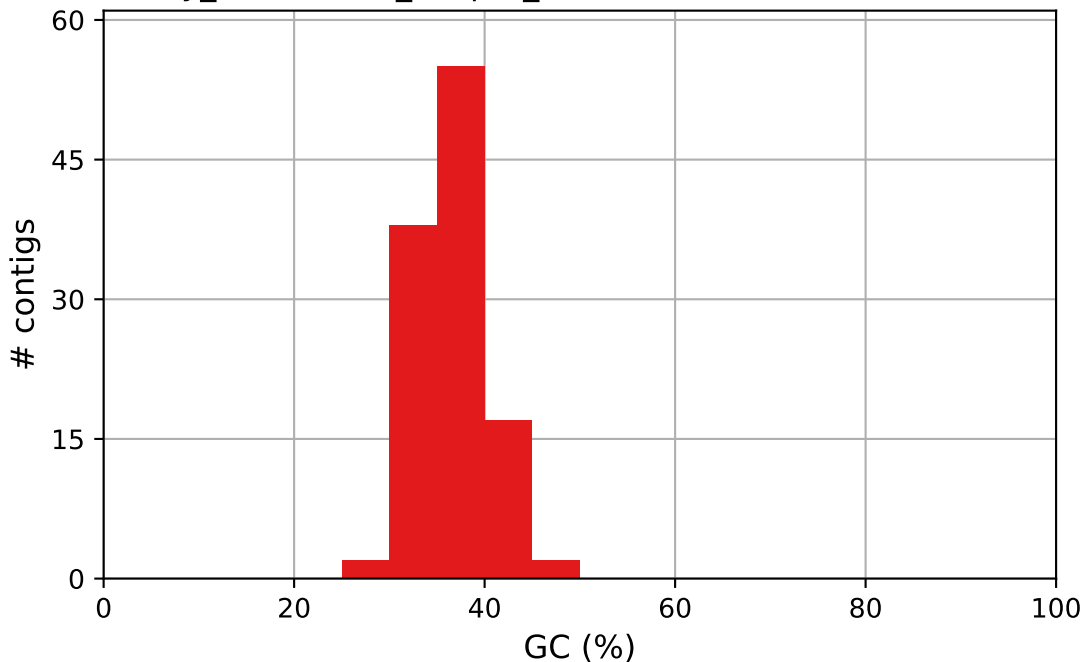


folds.reduced

— Oly_Redundans_Output_Try_2_scaffolds.reduced

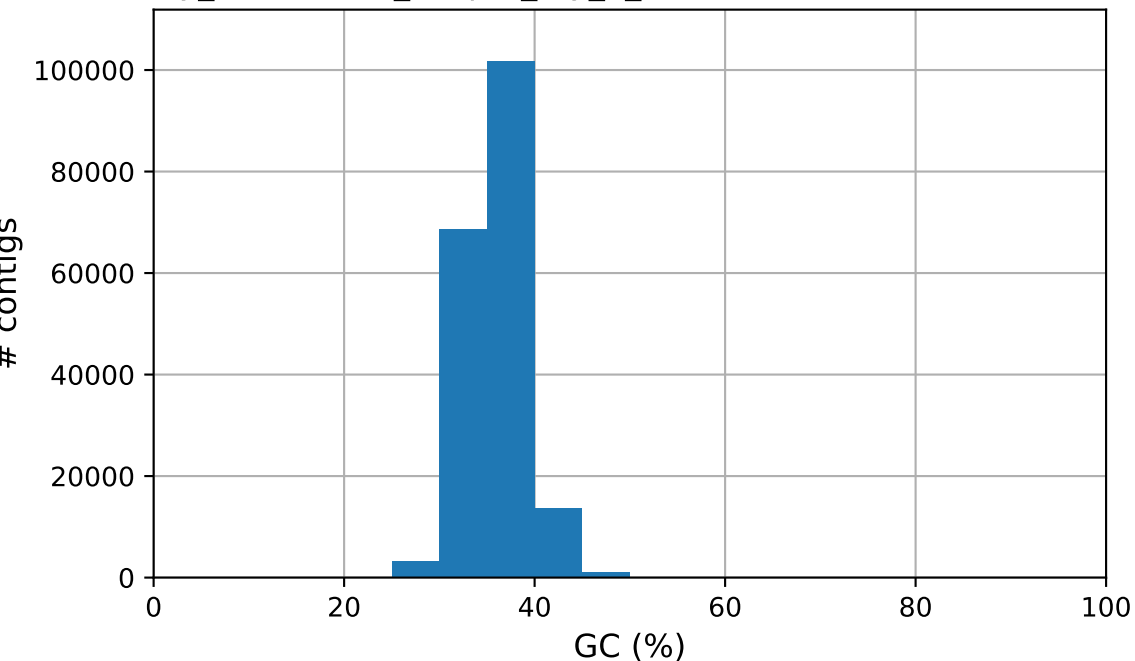
— 20171003

Oly_Redundans_Output_scaffolds.reduced GC content



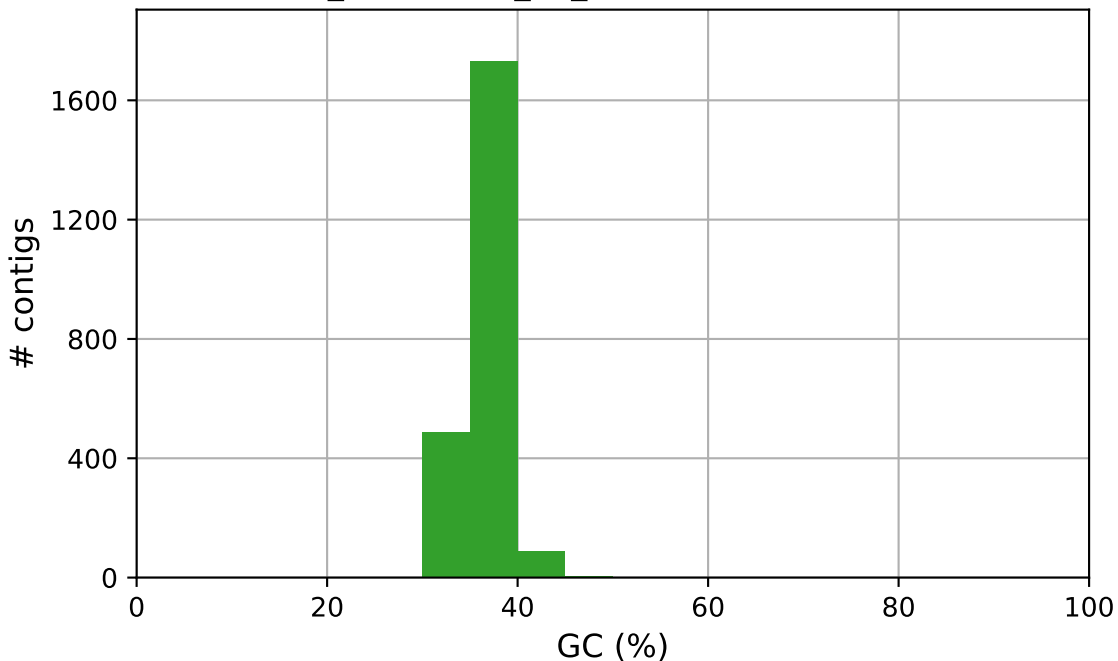
Oly_Redundans_Output_scaffolds.reduced

Oly_Redundans_Output_Try_2_scaffolds.reduced GC content



Oly_Redundans_Output_Try_2_scaffolds.reduced

20171003_redundans_01_scaffolds.reduced GC content



20171003_redundans_01_scaffolds.reduced