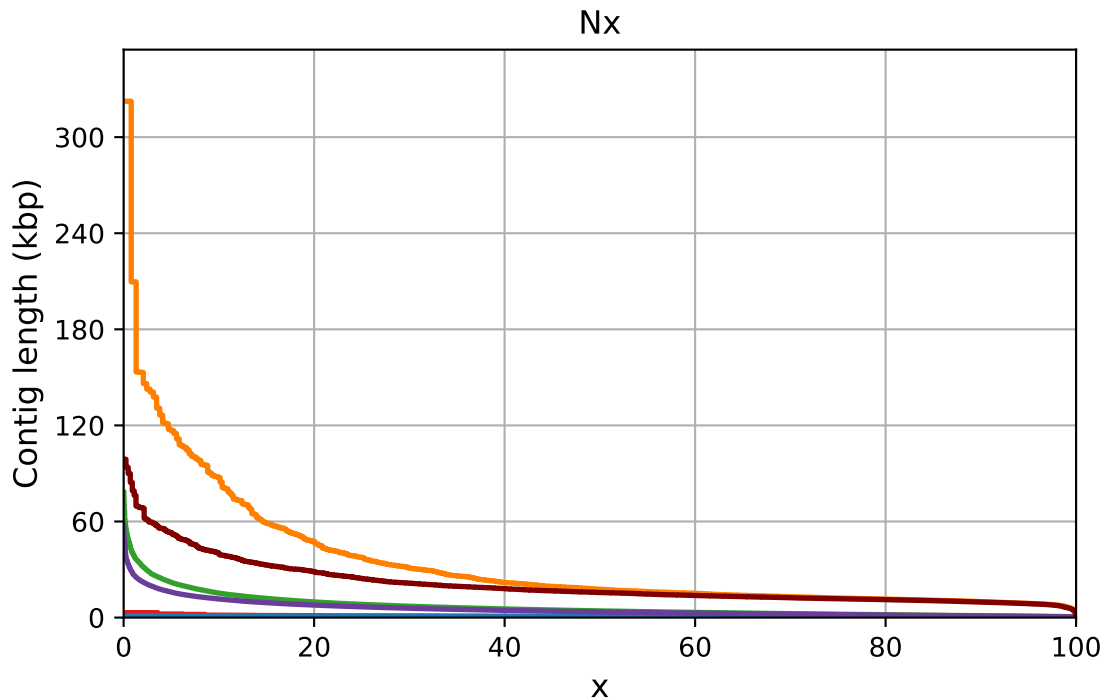


## Report

	Oly_Redundans_Output_scaffolds.reduced	Oly_Redundans_Output_scaffolds.reduced_broken	Oly_Redundans_Output_Try_2_scaffolds.reduced	Oly_Redundans_Output_Try_2_scaffolds.reduced_broken	20171003_redundans_01_scaffolds.reduced	20171003_redundans_01_scaffolds.reduced_broken
# contigs (>= 0 bp)	3642	32	300593	209699	2315	2632
# contigs (>= 1000 bp)	18	3	137301	146338	2315	2631
# contigs (>= 5000 bp)	0	0	24009	21527	2282	2583
# contigs (>= 10000 bp)	0	0	6254	4563	1811	2044
# contigs (>= 25000 bp)	0	0	586	216	304	262
# contigs (>= 50000 bp)	0	0	36	6	91	37
Total length (>= 0 bp)	968128	21590	546928670	503440027	40561504	40280190
Total length (>= 1000 bp)	25115	3155	476206320	457444142	40561504	40279689
Total length (>= 5000 bp)	0	0	220366692	181002109	40443936	40117304
Total length (>= 10000 bp)	0	0	99646272	66520288	36412694	35529904
Total length (>= 25000 bp)	0	0	19574809	6799562	14794719	9781949
Total length (>= 50000 bp)	0	0	2106424	321581	7662042	2319398
# contigs	114	32	188612	209699	2315	2632
Largest contig	3063	1083	78788	57951	322397	98902
Total length	85207	21590	513841258	503440027	40561504	40280190
GC (%)	36.24	36.07	35.90	35.90	36.46	36.46
N50	682	639	4175	3545	17679	15655
N75	569	576	2103	1837	12211	11745
L50	40	13	32022	38434	573	809
L75	74	22	75613	87960	1274	1559
# N's per 100 kbp	17127.70	0.00	1019.31	37.83	695.24	1.82

All statistics are based on contigs of size >= 500 bp, unless otherwise noted (e.g., "# contigs (>= 0 bp)" and "Total length (>= 0 bp)" include all contigs).



ed  
ed\_broken

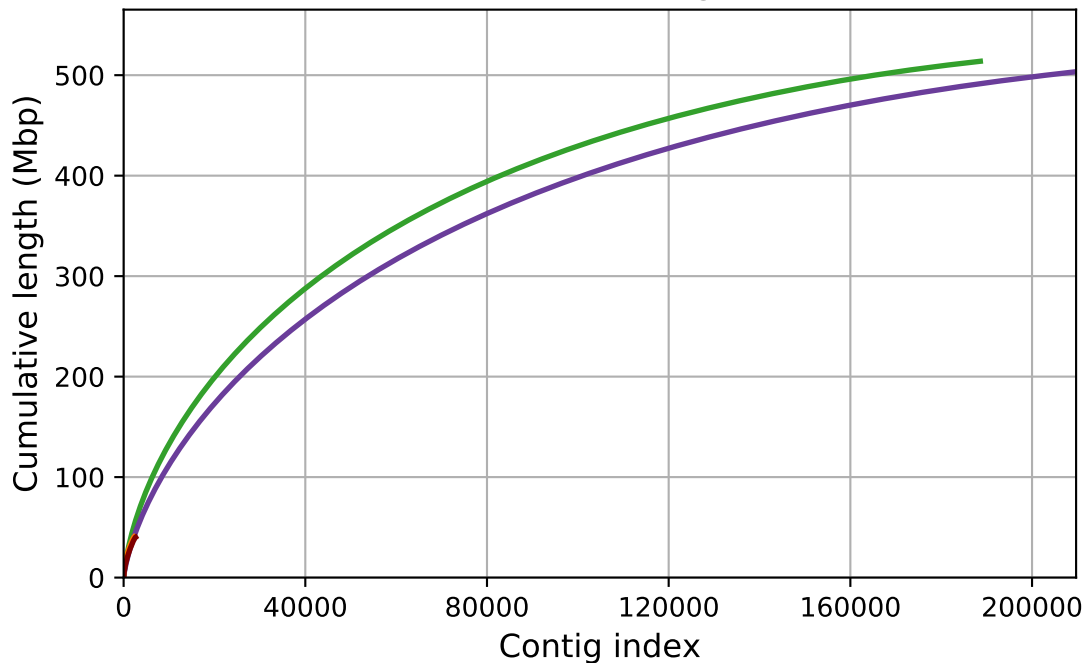
— Oly\_Redundans\_Output\_Try\_2\_scaffolds.reduced

— Oly\_Redundans\_Output\_Try\_2\_scaffolds.reduced\_broken

— 20171

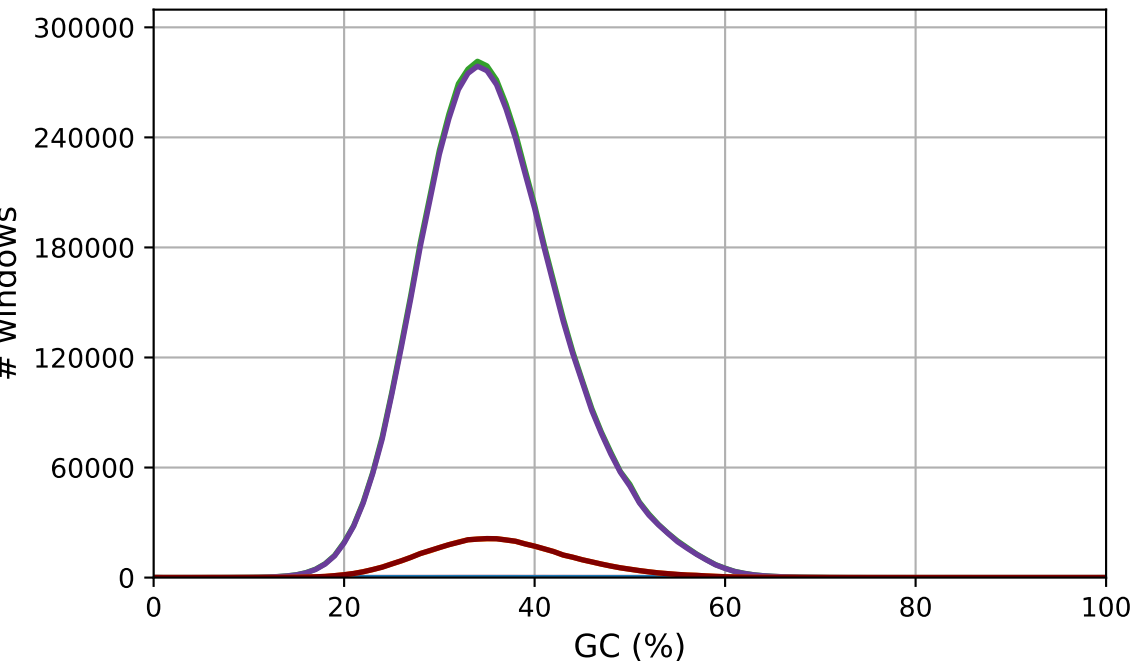
— 20171

### Cumulative length



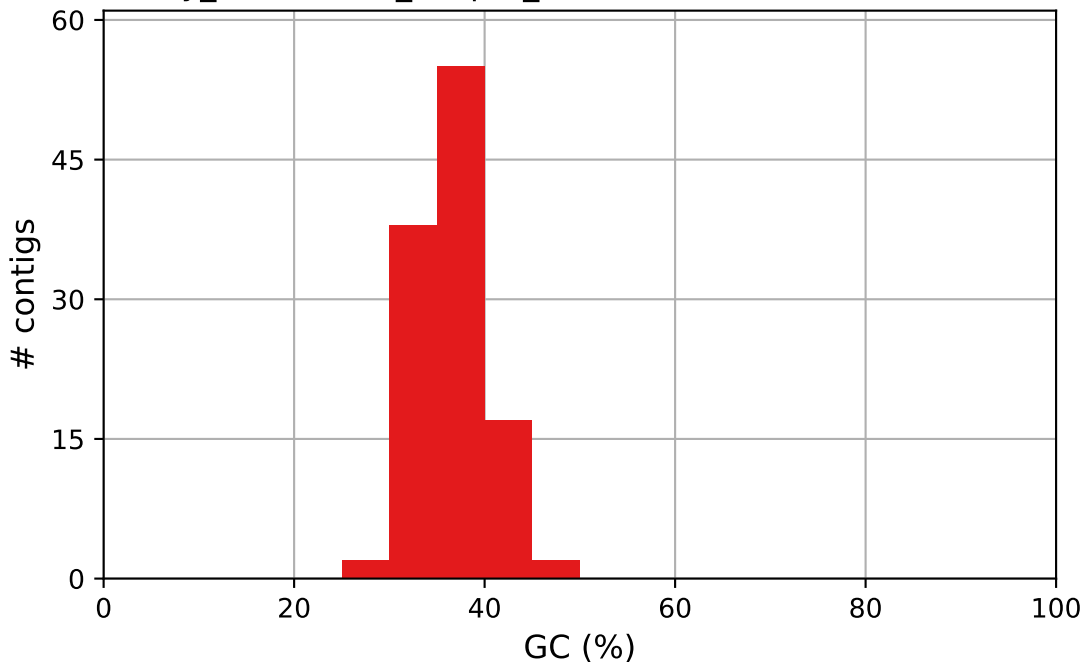
ed — Oly\_Redundans\_Output\_Try\_2\_scaffolds.reduced — 2017J  
ed\_broken — Oly\_Redundans\_Output\_Try\_2\_scaffolds.reduced\_broken — 2017J

# GC content



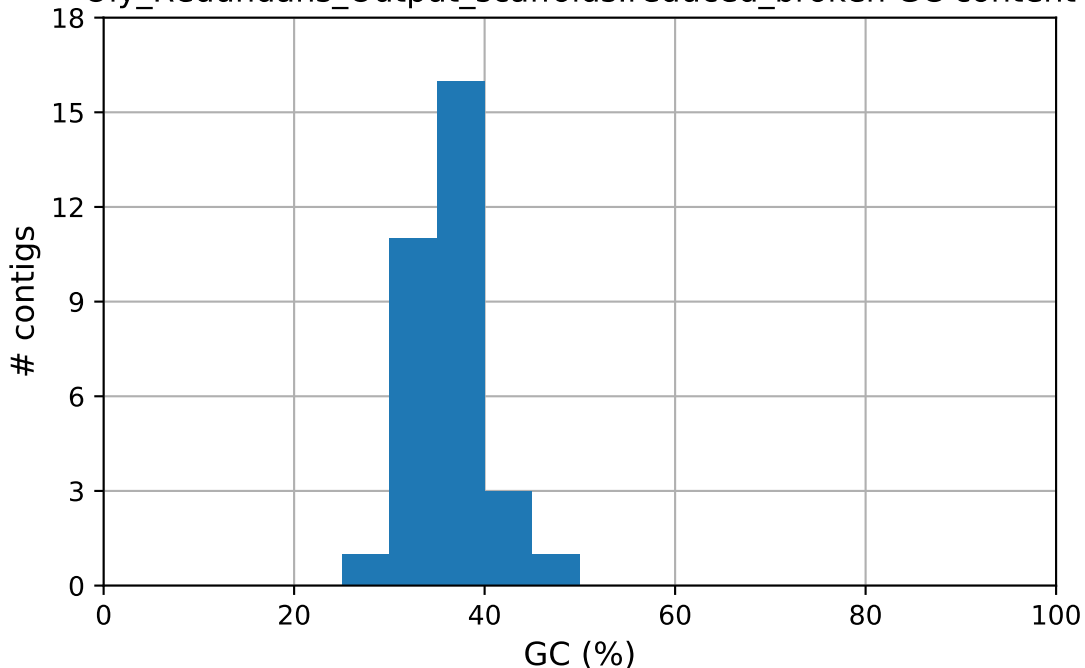
ed — Oly\_Redundans\_Output\_Try\_2\_scaffolds.reduced — 20171  
ed\_broken — Oly\_Redundans\_Output\_Try\_2\_scaffolds.reduced\_broken — 20171

Oly\_Redundans\_Output\_scaffolds.reduced GC content



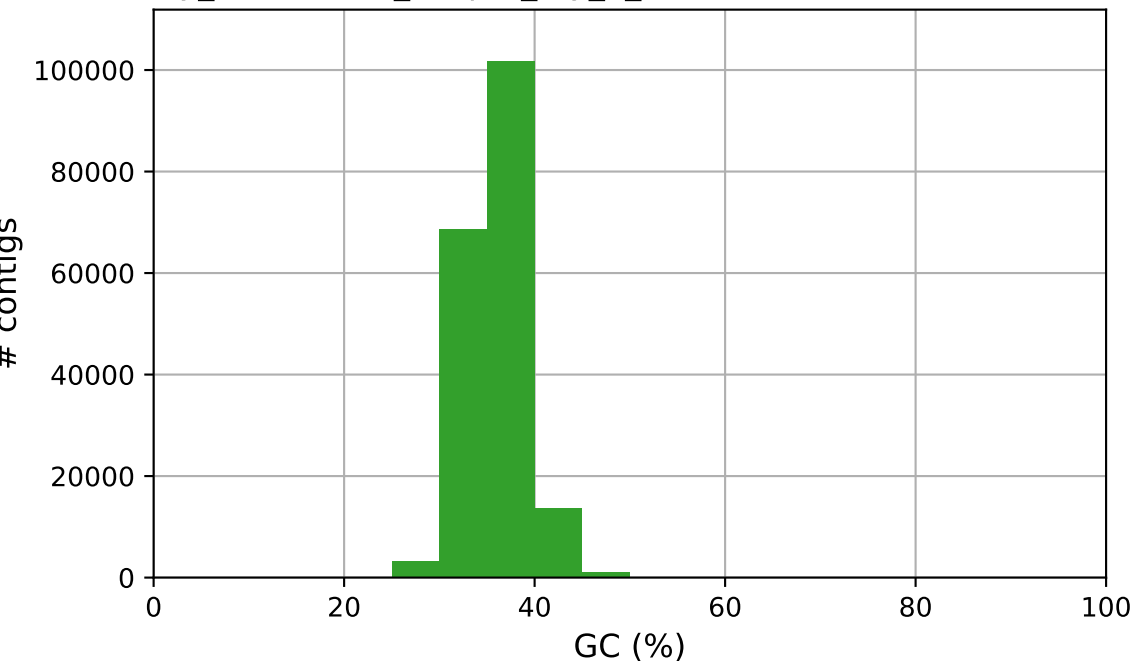
Oly\_Redundans\_Output\_scaffolds.reduced

Oly\_Redundans\_Output\_scaffolds.reduced\_broken GC content



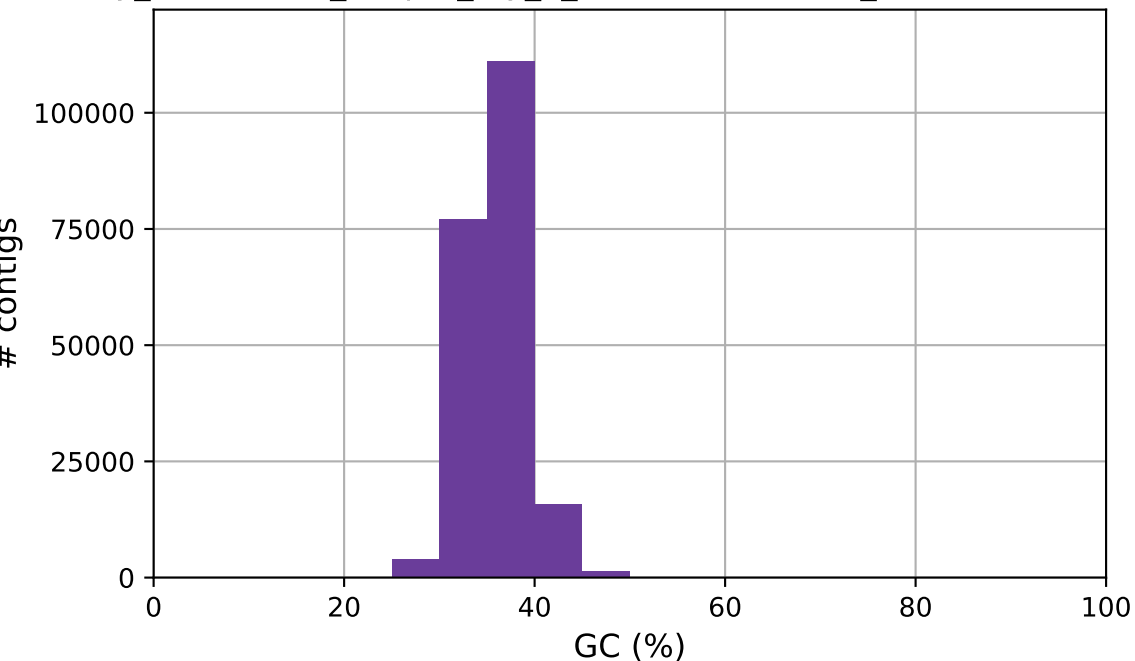
Oly\_Redundans\_Output\_scaffolds.reduced\_broken

Oly\_Redundans\_Output\_Try\_2\_scaffolds.reduced GC content



Oly\_Redundans\_Output\_Try\_2\_scaffolds.reduced

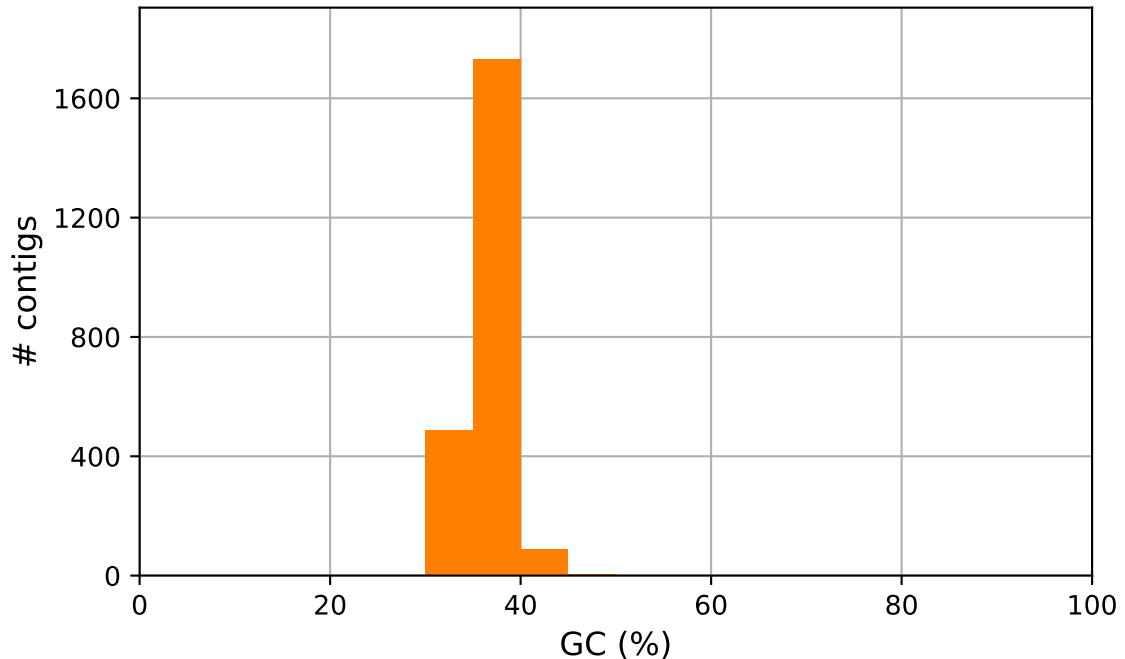
Oly\_Redundans\_Output\_Try\_2\_scaffolds.reduced\_broken GC content



Oly\_Redundans\_Output\_Try\_2\_scaffolds.reduced\_broken

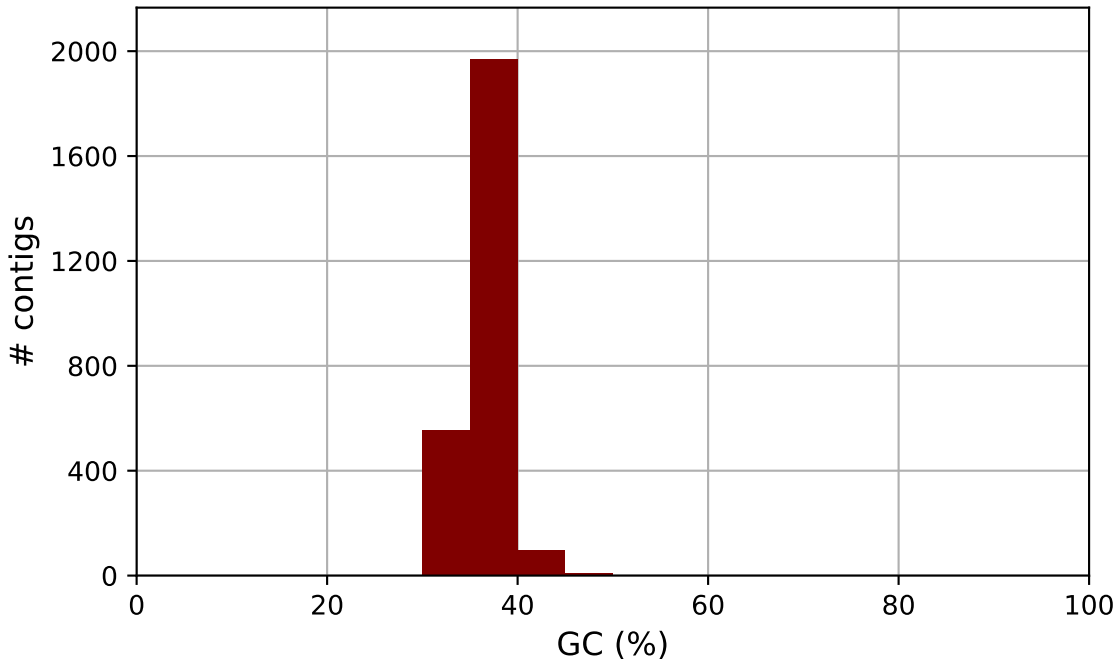


20171003\_redundans\_01\_scaffolds.reduced GC content



20171003\_redundans\_01\_scaffolds.reduced

20171003\_redundans\_01\_scaffolds.reduced\_broken GC content



20171003\_redundans\_01\_scaffolds.reduced\_broken