



ZYMO RESEARCH

The Beauty of Science is to Make Things Simple

INSTRUCTION MANUAL

EZ DNA Methylation-Gold™ Kit

Catalog Nos. **D5005 & D5006**

Highlights

- Complete bisulfite conversion of GC-rich DNA in less than 3 hours.
- A coupled heat denaturation/conversion reaction step streamlines the conversion of unmethylated cytosines into uracil.
- DNA precipitations are omitted. Instead, DNA is cleaned and desulphonated in a single step using state-of-the-art spin columns.
- Eluted, ultra-pure DNA is ideal for use in subsequent molecular-based analyses.

Contents

Product Contents	1
Introduction to DNA Methylation.....	2
Product Description.....	3
Product Specifications.....	4
Reagent Preparation	4
Protocol.....	5
Appendix.....	6
Frequently Asked Questions	7
Ordering Information	8
List of Related Products	9

Product Contents:

EZ DNA Methylation-Gold™ Kit	D5005	D5006	Storage Temperature
CT Conversion Reagent*	50 rxns.	200 rxns.	Room Temp.
M-Dilution Buffer	1.5 ml	7 ml	Room Temp.
M-Dissolving Buffer	500 µl	1.2 ml	Room Temp.
M-Binding Buffer	30 ml	125 ml	Room Temp.
M-Wash Buffer**	6 ml	24 ml	Room Temp.
M-Desulphonation Buffer	10 ml	40 ml	Room Temp.
M-Elution Buffer	1 ml	4 ml	Room Temp.
Zymo-Spin™ IC Columns	50 ct.	200 ct.	Room Temp.
Collection Tubes	50 ct.	200 ct.	Room Temp.
Instruction Manual	1	1	-

Note - Integrity of kit components is guaranteed for one year from date of purchase. Reagents are routinely tested on a lot-to-lot basis to ensure they provide maximal performance and reliability.

* 900 µl water, 300 µl **M-Dilution Buffer**, and 50 µl **M-Dissolving Buffer** must be added per tube of **CT Conversion Reagent** prior to use.

** Add 24 ml of 100% ethanol to the 6 ml **M-Wash Buffer** concentrate (D5005) or 96 ml of 100% ethanol to the 24 ml **M-Wash Buffer** concentrate (D5006) before use.

EZ DNA Methylation-Gold™ Kit technologies are patent pending.

Use of Methylation Specific PCR (MSP) is protected by US Patents 5,786,146 & 6,017,704 & 6,200,756 & 6,265,171 and International Patent WO 97/46705. No license under these patents to use the MSP process is conveyed expressly or by implication to the purchaser by the purchase of this product.

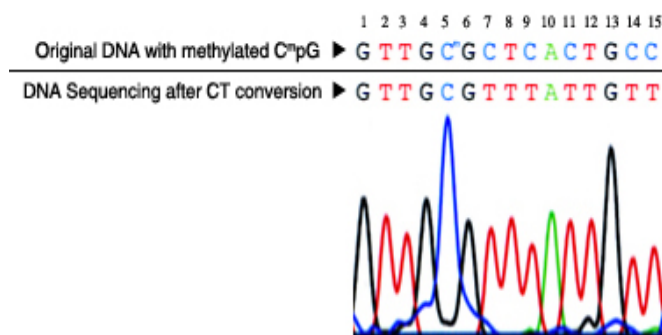
Note - ™ Trademarks of Zymo Research Corporation. This product is for research use only and should only be used by trained professionals. Some reagents included with this kit are irritants. Wear protective gloves and eye protection. Follow the safety guidelines and rules enacted by your research institution or facility.

ZYMO RESEARCH CORP.

Introduction to DNA Methylation:

DNA methylation is a naturally occurring event in both prokaryotic and eukaryotic organisms. In prokaryotes DNA methylation provides a way to protect host DNA from digestion by restriction endonucleases that are designed to eliminate foreign DNA, and in higher eukaryotes DNA methylation functions in the regulation/control of gene expression (1). It has been demonstrated that aberrant DNA methylation is a widespread phenomenon in cancer and may be among the earliest changes to occur during oncogenesis (2). DNA methylation has also been shown to play a central role in gene imprinting, embryonic development, X-chromosome gene silencing, and cell cycle regulation. In many plants and animals, DNA methylation consists of the addition of a methyl group to the fifth carbon position of the cytosine pyrimidine ring via a methyltransferase enzyme (3). The majority of DNA methylation in mammals occurs in 5'-CpG-3' dinucleotides, but other methylation patterns do exist. In fact, about 80 percent of all 5'-CpG-3' dinucleotides in mammalian genomes are found to be methylated, whereas the majority of the twenty percent that remain unmethylated are within promoters or in the first exons of genes.

The ability to detect and quantify DNA methylation efficiently and accurately has become essential for the study of cancer, gene expression, genetic diseases, as well as many other important aspects of biology. To date, a number of methods have been developed to detect/quantify DNA methylation including: high-performance capillary electrophoresis (4) and methylation-sensitive arbitrarily primed PCR (5). However, the most common technique used today remains the bisulfite conversion method (6). This technique involves treating methylated DNA with bisulfite, which converts unmethylated cytosines into uracil. Methylated cytosines remain unchanged during the treatment. Once converted, the methylation profile of the DNA can be determined by PCR amplification followed by DNA sequencing (see below).



DNA sequencing results following bisulfite treatment. DNA with methylated C^mpG at nucleotide position #5 was processed using the **EZ DNA Methylation™ Kit**. The recovered DNA was amplified by PCR and then sequenced directly. The methylated cytosine at position #5 remained intact while the unmethylated cytosines at positions #7, 9, 11, 14 and 15 were completely converted into uracil following bisulfite treatment and detected as thymine following PCR.

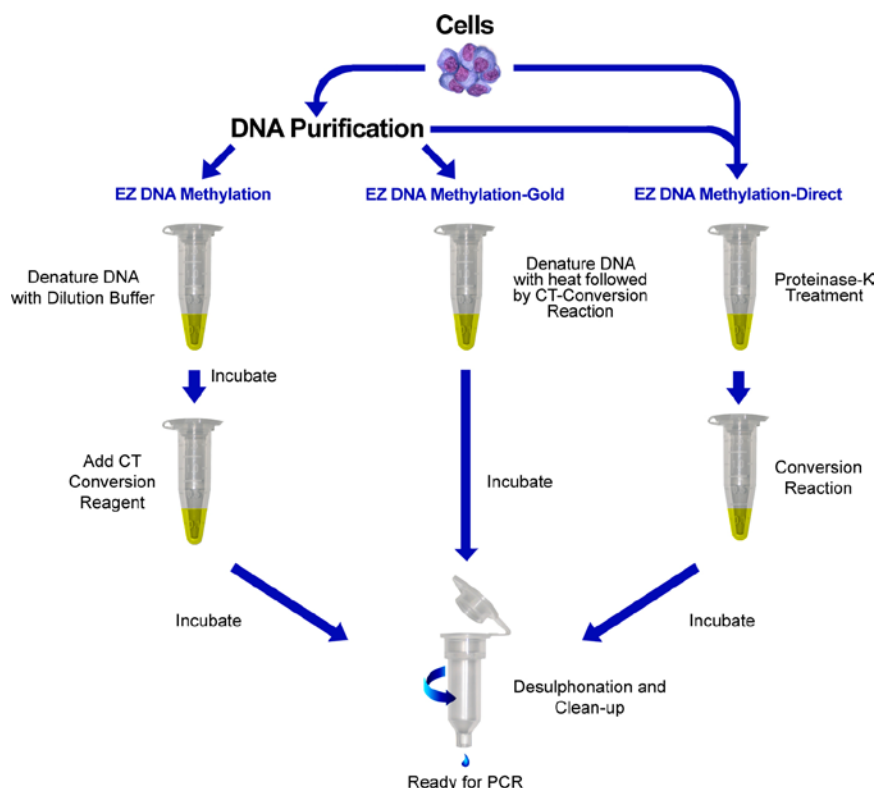
References:

1. Costello JF, Plass CJ. *Med. Genet.* 2001; 38(5): 285-303.
2. Stirzaker C. *Cancer Res.* 1997; 57(11): 2229-2237.
3. Adams RL. *Bioessays.* 1995; 17(2): 139-145.
4. Fraga MF, *et al.* *Electrophoresis.* 2000; 21(14): 2990-2994.
5. Gonzalgo ML. *Cancer Res.* 1997; 57(4): 594-599.
6. Frommer M. *Proc. Natl. Acad. Sci. USA.* 1992; 89(5): 1827-1831.

Product Description:

The **EZ DNA Methylation-Gold™ Kit** is a refinement of our popular **EZ DNA Methylation™ Kit**. The **EZ DNA Methylation-Gold™ Kit** integrates DNA denaturation and bisulfite conversion processes into one-step. This is accomplished using temperature denaturation to replace chemical denaturation with sodium hydroxide in the previous protocol. Also, the kit has been streamlined for high yield recovery of DNA following DNA bisulfite conversion. Both kits are based on a three-step reaction process between cytosine and sodium bisulfite resulting in cytosine being converted into uracil. The **EZ DNA Methylation-Gold™** and **EZ DNA Methylation™ Kits** share innovative in-column desulphonation technology that eliminates cumbersome DNA precipitation steps while providing researchers consistent results every time. The kits have been designed to minimize template degradation, loss of DNA during treatment and clean-up, and to provide complete conversion of unmethylated cytosines. Recovered DNA is ideal for PCR amplification for downstream analyses including endonuclease digestion, sequencing, microarrays, etc.

An outline comparing the **EZ DNA Methylation-Gold™ Kit** procedure to Zymo Research's other methylation kits is shown below.



Outline of the **EZ DNA Methylation™**, **EZ DNA Methylation-Gold™** and **EZ DNA Methylation-Direct™** Kit procedures.

Note: 96-Well spin-plate formats are available for processing larger numbers of samples. Also, MapPrep kits are available (p. 8) for adaptation to liquid handling robots (e.g., Tecan – Freedom EVO®) and automated sample prep.

Selected EZ DNA Methylation™ Kit Citations:

1. Ehrich M, *et al.* *Nuc. Acids Res.* 2007; 35 (5): e29
2. Kaneda M, *et al.* *Nature.* 2004; 429: 900-903
3. Zhang F, *et al.* *Proc. Natl. Acad. Sci. USA.* 2007; 104 (11): 4395-4400.
4. Oda M, *et al.* *Genes & Dev.* 2006; 20: 3382-3394.
5. England RPM, *et al.* *Nature Meth.* 2005; 2: 1-2.

Specifications:

- **DNA Input:** Samples containing 500 pg - 2 µg of DNA. For optimal results, the amount of input DNA should be from 200 to 500 ng.
- **Conversion Efficiency:** > 99% of non-methylated C residues are converted to U; > 99% protection of methylated cytosines.
- **DNA Recovery:** > 75%

Reagent Preparation:

- **Preparation of CT Conversion Reagent**

The **CT Conversion Reagent** supplied within this kit is a solid mixture and must be prepared prior to first use. Prepare as follows:

1. Add 900 µl water, 300 µl of **M-Dilution Buffer**, and 50 µl **M-Dissolving Buffer** to a tube of **CT Conversion Reagent**.
2. Mix at room temperature with frequent vortexing or shaking for 10 minutes.

Note: It is normal to see trace amounts of undissolved reagent in the **CT Conversion Reagent**. Each tube of **CT Conversion Reagent** is designed for 10 separate DNA treatments.

Storage: The **CT Conversion Reagent** is light sensitive, so minimize its exposure to light. For best results, the **CT Conversion Reagent** should be used immediately following preparation. If not used immediately, the **CT Conversion Reagent** solution can be stored overnight at room temperature, one week at 4°C, or up to one month at -20°C. Stored **CT Conversion Reagent** solution must be warmed to 37°C, then vortexed prior to use.

- **Preparation of M-Wash Buffer**

Add 24 ml of 100% ethanol to the 6 ml **M-Wash Buffer** concentrate (D5005) or 96 ml of 100% ethanol to the 24 ml **M-Wash Buffer** concentrate (D5006) before use.

Protocol:

Note: For DNA volumes >20 µl, an adjustment needs to be made during the preparation of the **CT Conversion Reagent**. The amount of water is decreased 100 µl for each 10 µl increase in DNA sample volume. For example, for a 40 µl DNA sample, 700 µl of water is added to make the **CT Conversion Reagent**. The volume of **CT Conversion Reagent** added to the sample must also be decreased by the same volume as the sample is increased, total reaction volume remains 150 µl. The maximum DNA sample volume to be used for each conversion reaction is 50 µl. Do not adjust the volumes of either the **M-Dissolving Buffer** or **M-Dilution Buffer**.

The capacity of the collection tube with the column inserted is 800 µl. Empty the collection tube whenever necessary to prevent contamination of the column contents by the flow-through.

Alternatively, water or TE (pH ≥ 6.0) can be used for elution if required for your experiments.

1. Add 130 µl of the **CT Conversion Reagent** to 20 µl of your DNA sample in a PCR tube. If the volume of the DNA sample is less than 20 µl, make up the difference with water. Mix the sample by flicking the tube or pipetting the sample up and down, then centrifuge the liquid to the bottom of the tube.
2. Place the sample tube in a thermal cycler and perform the following steps*:
 1. 98°C for 10 minutes
 2. 64°C for 2.5 hours
 3. 4°C storage up to 20 hours.

*For some samples, alternative parameters may yield improved results (see Appendix). If you have been using this kit with good results using different reaction conditions than described above, you can continue using those same conditions.
3. Add 600 µl of **M-Binding Buffer** to a **Zymo-Spin™ IC Column** and place the column into a provided **Collection Tube**.
4. Load the sample (from Step 2) into the **Zymo-Spin™ IC Column** containing the **M-Binding Buffer**. Close the cap and mix by inverting the column several times.
5. Centrifuge at full speed ($\geq 10,000 \times g$) for 30 seconds. Discard the flow-through.
6. Add 100 µl of **M-Wash Buffer** to the column. Centrifuge at full speed for 30 seconds.
7. Add 200 µl of **M-Desulphonation Buffer** to the column and let stand at room temperature (20-30°C) for 15-20 minutes. After the incubation, centrifuge at full speed for 30 seconds.
8. Add 200 µl of **M-Wash Buffer** to the column. Centrifuge at full speed for 30 seconds. Add another 200 µl of **M-Wash Buffer** and centrifuge for an additional 30 seconds.
9. Place the column into a 1.5 ml microcentrifuge tube. Add 10 µl of **M-Elution Buffer** directly to the column matrix. Centrifuge for 30 seconds at full speed to elute the DNA.

The DNA is ready for immediate analysis or can be stored at or below -20°C for later use. For long term storage, store at or below -70°C. We recommend using 1-4 µl of eluted DNA for each PCR, however, up to 10 µl can be used if necessary. The elution volume can be > 10 µl depending on the requirements of your experiments, but small elution volumes will yield more concentrated DNA.

Appendix: Bisulfite Conversion and PCR Optimization

1. **Reaction Conditions:** The reaction conditions given in Step 2 of the Protocol will generate consistent results for both easy and difficult to convert template DNAs including those that are GC rich. However, the two protocols provided below (alternative 1 & 2) may yield better results in PCR amplification of longer DNA fragments. However, should the DNA template have >80% GC composition, then these conditions may result in incomplete template cytosine to uracil conversion.

Alternative 1:

1. 98°C for 10 minutes
2. 53°C for 30 minutes
3. 53°C for 6 minutes
4. 37°C for 30 minutes } 8 cycles
5. 4°C storage

Alternative 2:

1. 98°C for 10 minutes
2. 53°C for 4 hours
3. 4°C storage

2. **Bisulfite Conversion of Double Stranded DNA Templates.** The following illustrates what occurs to a DNA template during bisulfite conversion.

Template:	A: 5' - <u>GAC<u>C</u>GTTCCAGGTC</u> CAGCAGT <u>GCG</u> <u>C</u> T -3'
	B: 3' - <u>CTGGC</u> AAGGTC <u>CAGGTC</u> GTCAG <u>CG</u> <u>C</u> GA-5'
Bisulfite Converted:	A: 5' - <u>GAT</u> <u>C</u> <u>G</u> TTTTAGGTTT <u>A</u> GT <u>A</u> GT <u>GCG</u> <u>T</u> -3'
	B: 3' - <u>TTGG</u> C <u>A</u> AGGTTT <u>A</u> GGTT <u>G</u> T <u>T</u> AT <u>G</u> CGA-5'

Note: Methylated "C" is underlined in the examples.

Note: Following bisulfite conversion, the strands are no longer complementary.

3. **PCR Primer Design.** Generally, primers 26 to 32 bases are required for amplification of bisulfite converted DNA. In general, all Cs should be treated as Ts for primer design purposes, unless they are in a CpG context. See example below.

Bisulfite Converted:	A: 5' - <u>GAT</u> <u>C</u> <u>G</u> TTTTAGGTTT <u>A</u> GT <u>A</u> GT <u>GCG</u> <u>T</u> -3'	
Primers: Reverse:	3' - <u>ATCATCAC</u> R <u>CAA</u> -5'	R = G/A
Forward:	5' - <u>GAT</u> <u>Y</u> <u>G</u> TTTTAGGTT-3'	Y = C/T

Note: Only one strand (A) is amplified by a given primer set. Only the reverse primer binds to the converted DNA, the forward primer will bind the strand generated by the reverse primer.

If the primer contains CpG dinucleotides with uncertain methylation status, then mixed bases with C and T (or G and A) can be used. Usually, there should be no more than one mixed position per primer and it should be located toward the 5' end of the primer. It is not recommended to have mixed bases located at the 3' end of the primer.

Zymo Taq™ is a "hot start" DNA polymerase specifically designed for the amplification of bisulfite treated DNA. (see page 9 for details)

Zymo Research provides primer design assistance with its Bisulfite Primer Seeker Program, available at: www.zymoresearch.com/tools/bisulfite-primer-seeker

4. **Amount of DNA Required for Bisulfite Conversion.** The minimal amount of human or mouse genomic DNA required for bisulfite treatment and subsequent PCR amplification is 100 µg. The optimal amount of DNA per bisulfite treatment is 200 to 500 ng. Although, up to 2 µg of DNA can be processed, it should be noted that high input levels of DNA may result in incomplete bisulfite conversion for some GC-rich regions.

5. **PCR Conditions.** Usually, 35 to 40 cycles are required for successful PCR amplification of bisulfite converted DNA. Optimal amplicon size should be between 150-300 bp; however larger amplicons (up to 1 kb) can be generated by optimizing the PCR conditions. Annealing temperatures between 55-60°C typically work well.

As most non-methylated cytosine residues are converted into uracil, the bisulfite-treated DNA usually is AT-rich and has low GC composition. Non-specific PCR amplification is relatively common with bisulfite treated DNA due to its AT-rich nature. PCR using "hot start" polymerases is strongly recommended for the amplification of bisulfite-treated DNA.

Frequently Asked Questions:

Q: Should the input DNA be dissolved in TE, water, or some other buffer prior to its conversion?

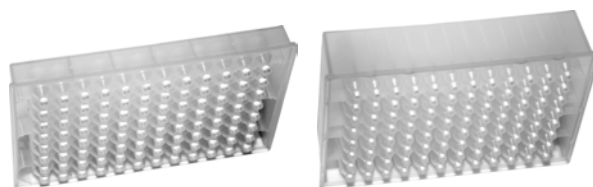
A: *Water, TE or modified TE buffers can be used to dissolve the DNA and do not interfere with the conversion process.*

Q: Which Taq polymerase(s) do you recommend for PCR amplification of converted DNA?

A: *We recommend a “hot start” DNA polymerase (e.g., ZymoTaq™, page 9).*

Q: Why are there two different catalog numbers for the EZ-96 DNA Methylation-Gold™ Kit?

A: *The two different catalog numbers are used to differentiate between the binding plates that are included in the kit. Deep and shallow-well binding plates are available to accommodate most rotors and microplate carriers. Below is a comparison of the two binding plates.*



Binding Plate	Silicon-A™ Plate	Zymo-Spin™ I-96 Plate
Style	Shallow-Well	Deep-Well
Height of Binding Plate	19 mm (0.75 inches)	35 mm (1.38 inches)
Binding Plate/Collection Plate Assembly	43 mm (1.69 inches)	60 mm (2.36 inches)
Binding Cap./Minimum Elution Volume	5 µg/30 µl	5 µg/15 µl
Catalog Numbers	D5007	D5008

Ordering Information:

Product Description	Catalog No.	Kit Size
EZ DNA Methylation-Gold™ Kit	D5005	50 rxns.
	D5006	200 rxns.
EZ-96 DNA Methylation-Gold™ Kit (Shallow-Well)	D5007	2 x 96 rxns.
EZ-96 DNA Methylation-Gold™ Kit (Deep-Well)	D5008	2 x 96 rxns.
EZ-96 DNA Methylation-Gold™ MagPrep*	D5046	4 x 96 rxns.
	D5047	8 x 96 rxns.

* **MagPrep** kits are adaptable to liquid handling robots (e.g., Tecan – Freedom EVO®) making them ideal for automated sample prep.

For Individual Sale	Catalog No.	Amount(s)
CT Conversion Reagent	D5001-1	1 tube
	D5003-1	1 bottle
M-Dilution Buffer	D5005-2	1.5 ml
	D5006-2	7 ml
M-Binding Buffer	D5005-3	30 ml
	D5006-3	125 ml
	D5040-3	250 ml
M-Wash Buffer	D5001-4	6 ml
	D5002-4	24 ml
	D5007-4	36 ml
	D5040-4	72 ml
M-Desulphonation Buffer	D5001-5	10 ml
	D5002-5	40 ml
	D5040-5	80 ml
M-Elution Buffer	D5001-6	1 ml
	D5002-6	4 ml
	D5007-6	8 ml
	D5041-6	40 ml
M-Dissolving Buffer	D5005-6	500 µl
	D5006-6	1.2 ml
Zymo-Spin™ IC Columns (capped)	C1004-50	50 columns
	C1004-250	250 columns
Collection Tubes	C1001-50	50 tubes
	C1001-500	500 tubes
	C1001-1000	1,000 tubes
MagBinding Beads	D4100-2-6	6ml
	D4100-2-8	8 ml
	D4100-2-12	12 ml
	D4100-2-16	16 ml
	D4100-2-24	24 ml
Zymo-Spin™ I-96 Binding Plates	C2004	2 plates
Silicon-A™ Binding Plates	C2001	2 plates
Conversion Plates w/ Pierceable Cover Film	C2005	2 plates/films
Collection Plates	C2002	2 plates
Elution Plates	C2003	2 plates

ZYMO RESEARCH CORP.

Epigenetics Products From Zymo Research

Product	Description	Kit Size	Cat No. (Format)
Bisulfite Kits for DNA Methylation Detection			
EZ DNA Methylation™ Kit	For the conversion of unmethylated cytosines in DNA to uracil via the <u>chemical-denaturation</u> of DNA and a specially designed CT Conversion Reagent. <i>Fast-Spin</i> technology ensures ultra-pure, converted DNA for subsequent DNA methylation analysis. Magnetic bead format for adaptation to automated liquid handling platforms.	50 Rxns. 200 Rxns. 2x96 Rxns. 2x96 Rxns. 4x96 Rxns. 8x96 Rxns.	D5001 (spin column) D5002 (spin column) D5003 (shallow-well plate) D5004 (deep-well plate) D5040 (magnetic bead) D5041 (magnetic bead)
EZ DNA Methylation-Gold™ Kit	For the fast (3 hr.) conversion of unmethylated cytosines in DNA to uracil via <u>heat/chemical-denaturation</u> of DNA and a specially designed CT Conversion Reagent. <i>Fast-Spin</i> technology ensures ultra-pure, converted DNA for subsequent DNA methylation analysis. Magnetic bead format for adaptation to automated liquid handling platforms.	50 Rxns. 200 Rxns. 2x96 Rxns. 2x96 Rxns. 4x96 Rxns. 8x96 Rxns.	D5005 (spin column) D5006 (spin column) D5007 (shallow-well plate) D5008 (deep-well plate) D5042 (magnetic bead) D5043 (magnetic bead)
EZ DNA Methylation-Direct™ Kit	Features simple and reliable DNA bisulfite conversion directly from blood, tissue (FFPE/LCM), and cells without the prerequisite for DNA purification in as little as 4-6 hrs. The increased sensitivity of this kit makes it possible to amplify bisulfite converted DNA from as few as 10 cells or 50 pg DNA. Magnetic bead format for adaptation to automated liquid handling platforms.	50 Rxns. 200 Rxns. 2x96 Rxns. 2x96 Rxns. 4x96 Rxns. 8x96 Rxns.	D5020 (spin column) D5021 (spin column) D5022 (shallow-well plate) D5023 (deep-well plate) D5044 (magnetic bead) D5045 (magnetic bead)
EZ DNA Methylation-Lightning™ Kit	Complete bisulfite conversion in about an hour using a unique liquid format conversion reagent that requires no preparation. <i>Fast-Spin</i> technology ensures ultra-pure, converted DNA for subsequent DNA methylation analysis. Magnetic bead format for adaptation to automated liquid handling platforms.	50 Rxns. 200 Rxns. 2x96 Rxns. 2x96 Rxns. 4x96 Rxns. 8x96 Rxns.	D5030 (spin column) D5031 (spin column) D5032 (shallow-well plate) D5033 (deep-well plate) D5046 (magnetic bead) D5047 (magnetic bead)
EZ DNA Methylation-Startup™ Kit	Designed for the first time user requiring a consolidated product to perform DNA methylation analysis. Includes technologies for sample processing, bisulfite treatment of DNA, and PCR amplification of "converted" DNA for methylation analysis.	1 Kit	D5024
Methylated DNA Standards			
Universal Methylated Human DNA Standard	Human (male) genomic DNA having all CpG sites methylated. To be used for the evaluation of bisulfite-mediated conversion of DNA. Supplied with a control primer set.	1 set	D5011
Universal Methylated Mouse DNA Standard	Mouse (male) DNA having all CpG sites methylated. To be used for the evaluation of bisulfite-mediated conversion of DNA. Supplied with a control primer set.	1 set	D5012
Other...			
ChIP DNA Clean & Concentrator™	Clean and concentrate DNA from any reaction or "crude" preparation in 2 min. A 6 µl minimum elution volume allows for highly concentrated DNA. Designed for samples containing up to 5 µg of DNA.	50 Preps. 50 Preps.	D5201 (uncapped column) D5205 (capped column)
Genomic DNA Clean & Concentrator™	Genomic DNA clean-up in minutes. Unique spin column technology for recovery of ultra-pure large-sized DNA (100 bp to ≥200 kb) DNA from any impure preparation (e.g., Proteinase K digestion).	25 Preps. 100 Preps.	D4010 D4011
ZymoTaq™ DNA Polymerase	ZymoTaq™ "hot start" DNA Polymerase is specifically designed for the amplification of "difficult" DNA templates including: bisulfite-treated DNA for methylation detection. The product generates specific amplicons with little or no by-product formation. Available either as a single buffer premix or as a polymerase system with components provided separately.	50 Rxns. 200 Rxns. 50 Rxns. 200 Rxns.	E2001 (system) E2002 (system) E2003 (premix) E2004 (premix)
Methylated-DNA IP Kit	IP with a highly specific anti-5-methylcytosine monoclonal antibody. Designed for the enrichment of 5-methylcytosine-containing DNA from any pool of fragmented genomic DNA for use in genome-wide methylation analysis.	10 Rxns.	D5101
Services			
Available for DNA Methylation and Hydroxymethylation at http://www.zymoresearch.com/services or inquire at services@zymoresearch.com ...powered by the latest Next-Gen Sequencing technologies!			

ZYMO RESEARCH CORP.