

NATIVE OYSTERS IN PUGET SOUND

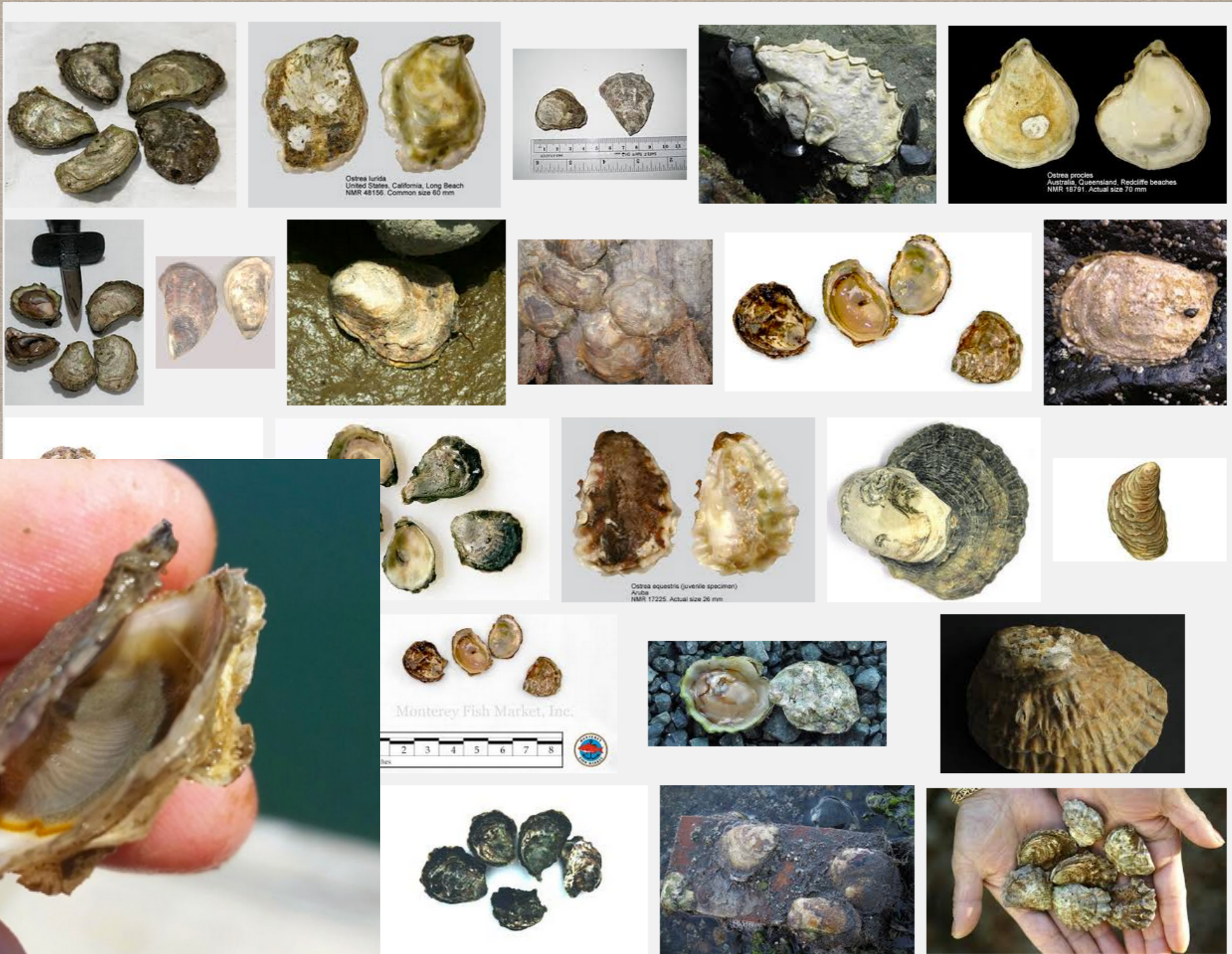
WHAT IS GOING ON WITH THEM?

WHO CARES?

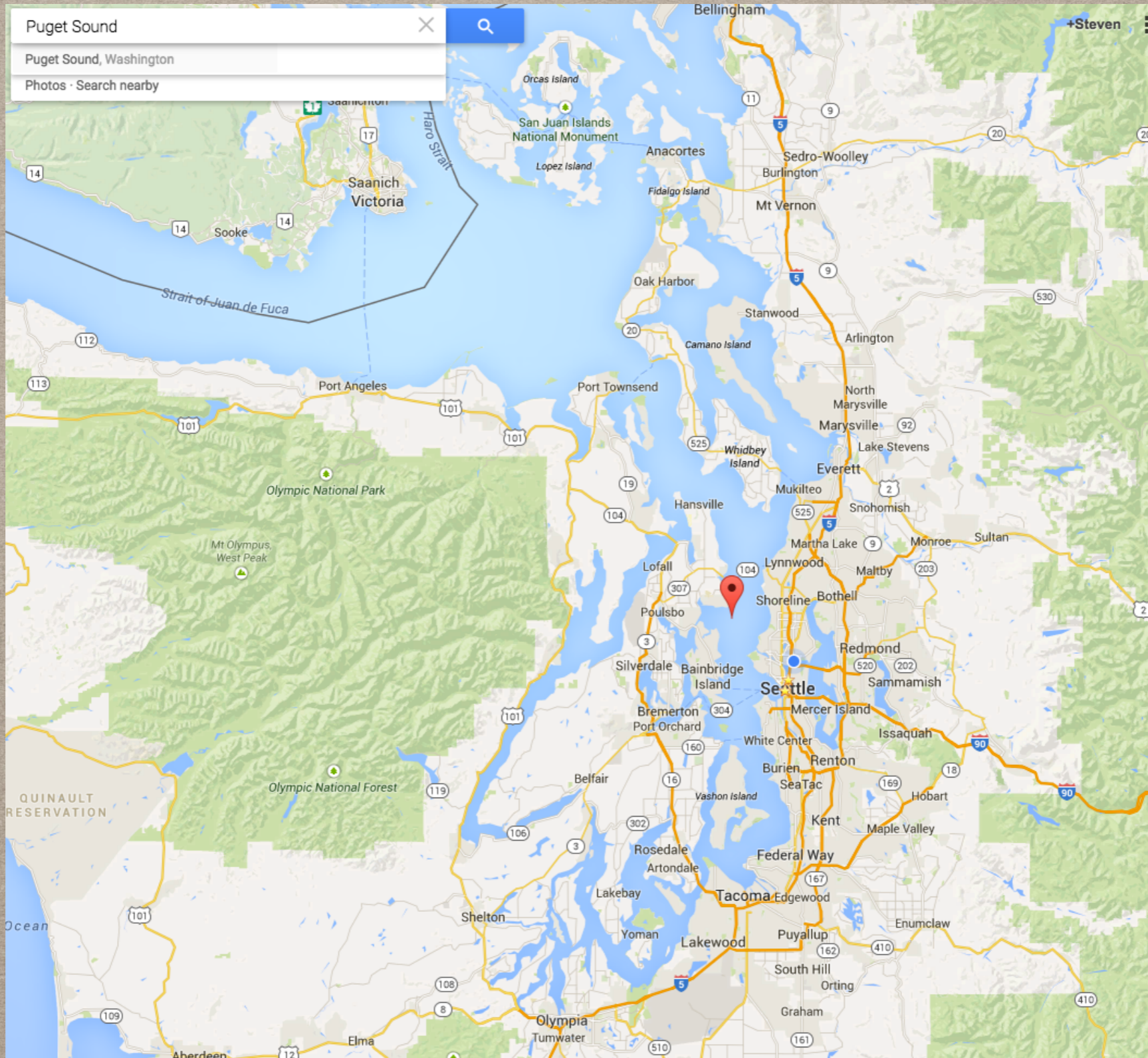
HOW DO WE KNOW?

WHAT MORE DO WE WANT TO KNOW?

OSTREA LURIDA



INITIAL QUESTION: ARE THEY ALL THE SAME?

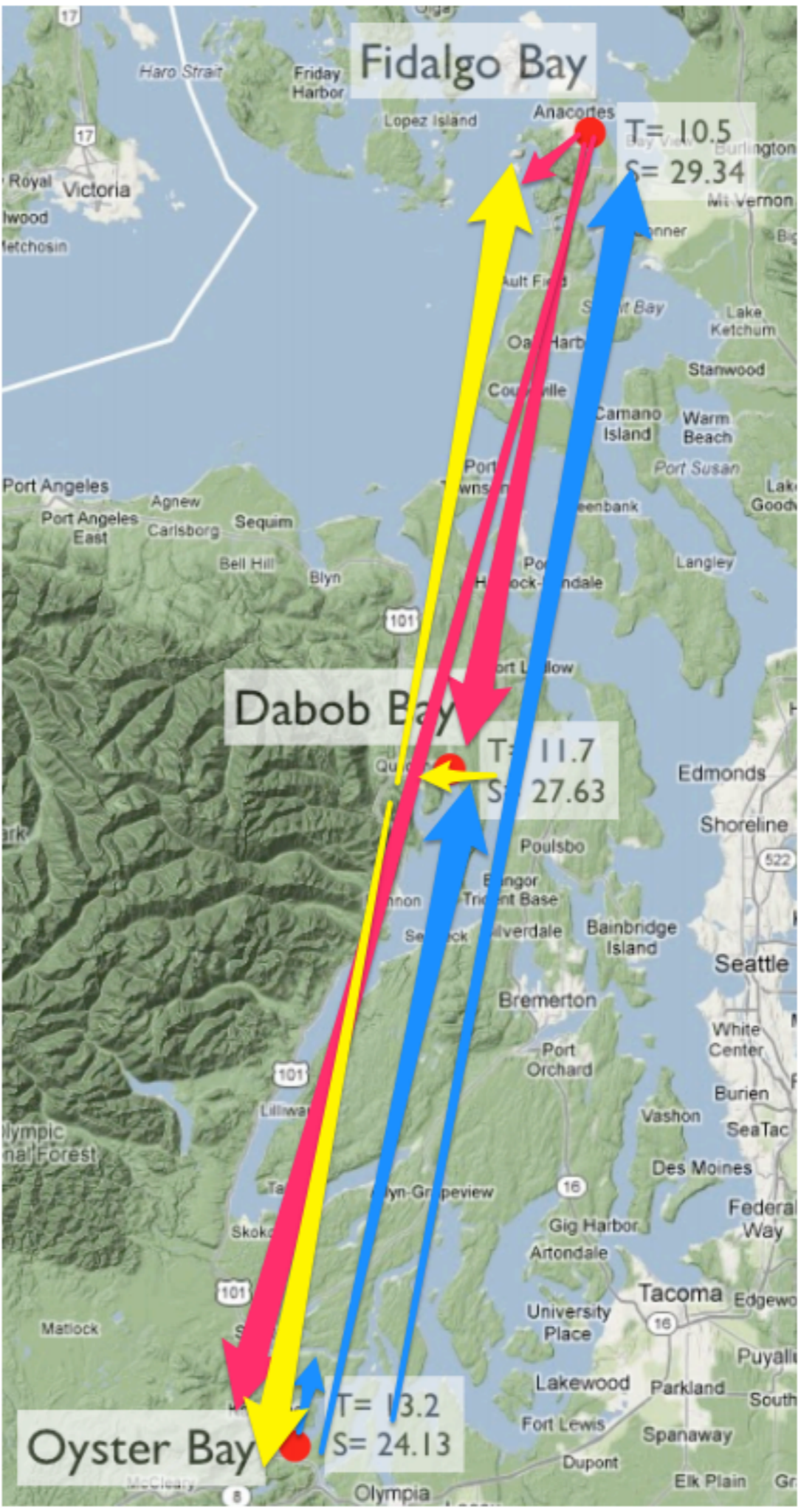


INITIAL QUESTION: ARE THEY ALL THE SAME?



EXPERIMENT

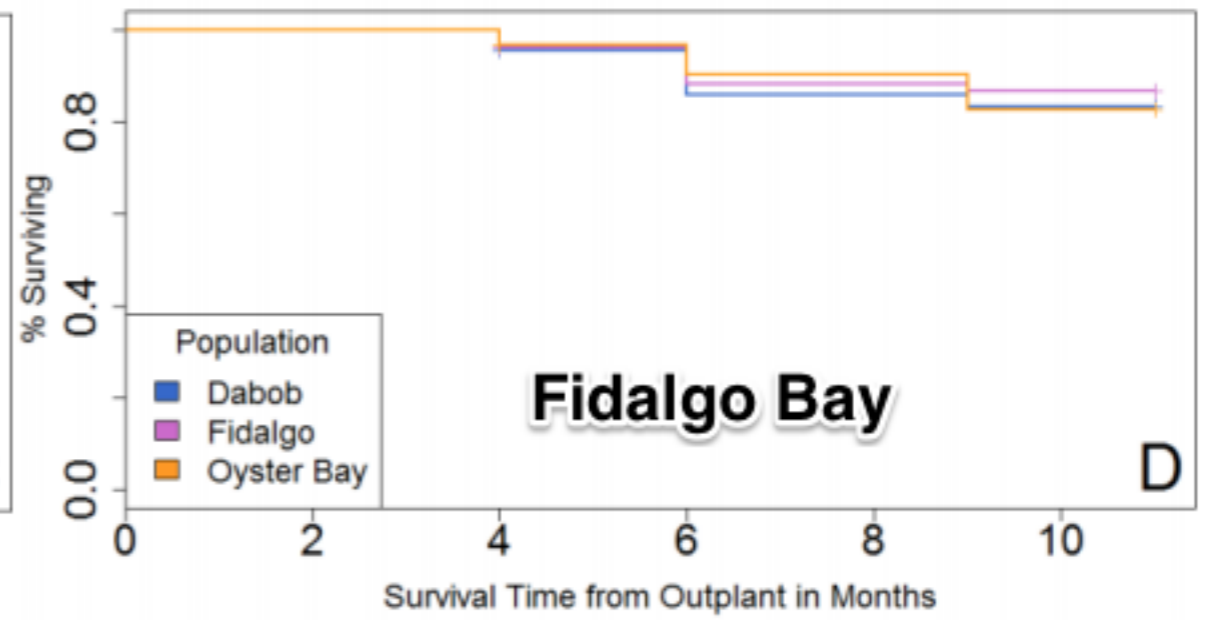
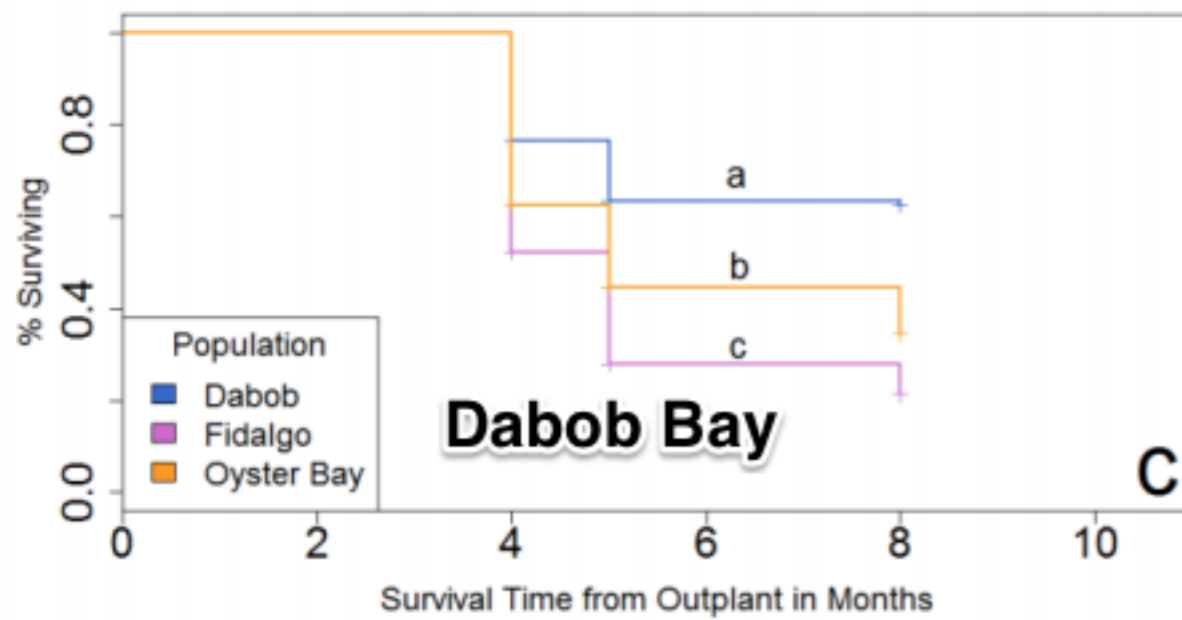
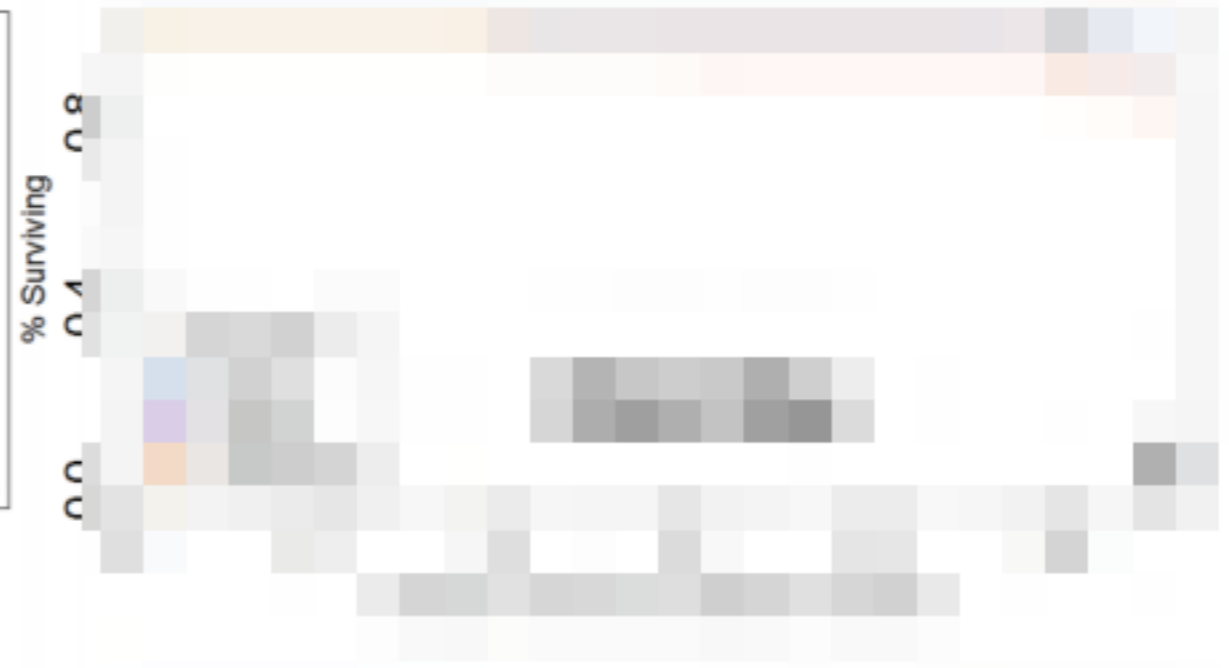
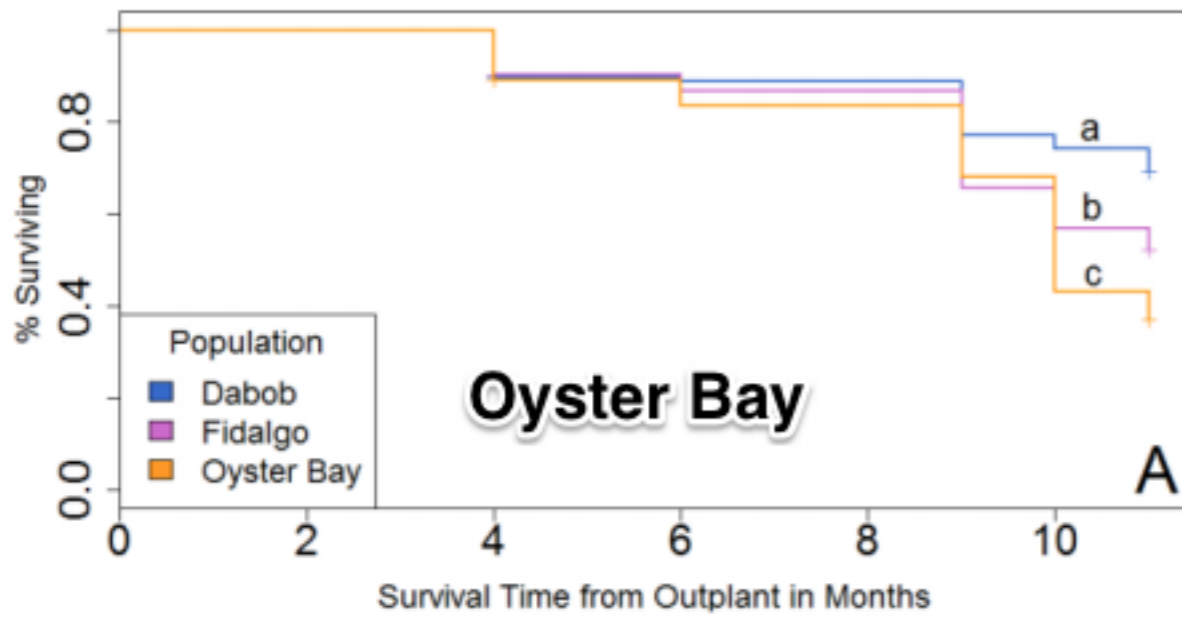
M



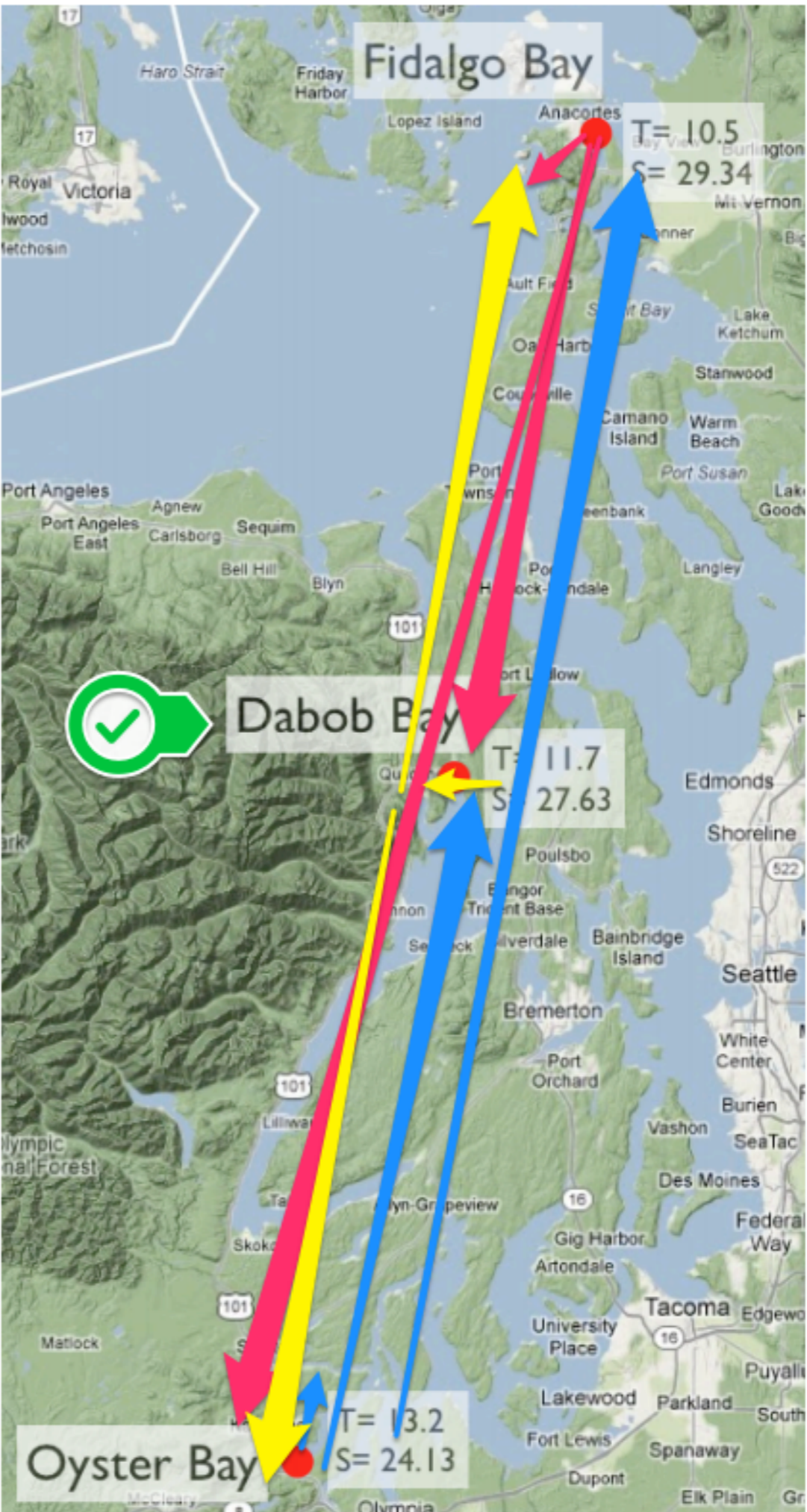
RESULTS

What do you think would happen?

RESULTS



EXPERIMENT



MORE QUESTIONS?

What does this mean?

Outside of ecological implications, what about fundamental biological question?