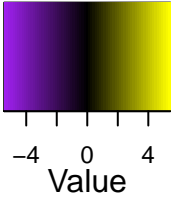
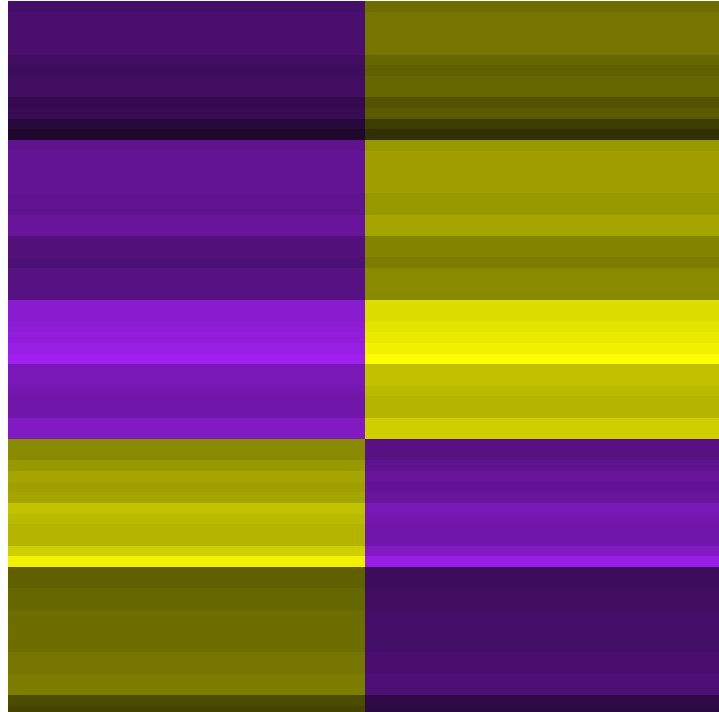
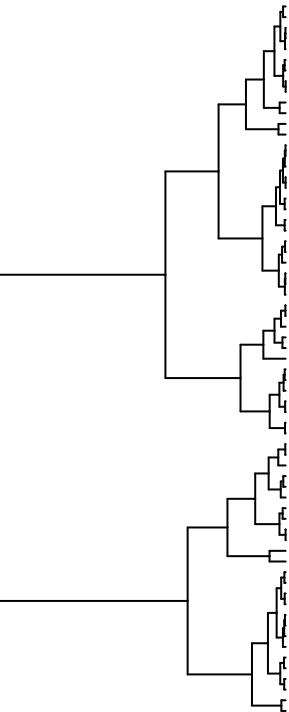


# Color Key



## samples vs. features

diffExpr.P1e-3\_C2.matrix.log2.centered



- FR1676\_c0\_s1\_12
- FR3284\_c0\_s2\_12
- FR2210\_c0\_s1\_14
- FR1127\_c0\_s2\_11
- FR2546\_c1\_s1\_12
- FR2791\_c0\_s1\_14
- FR2627\_c0\_s1\_11
- FR2108\_c0\_s2\_11
- FR2782\_c0\_s2\_14
- FR2749\_c1\_s2\_12
- FR3263\_c0\_s1\_12
- FR4946\_c0\_s2\_12
- FR2289\_c1\_s2\_14
- FR2958\_c0\_s1\_12
- FR2281\_c0\_s1\_11
- FR3289\_c0\_s1\_11
- FR3247\_c0\_s2\_12
- FR2681\_c0\_s1\_11
- FR3163\_c0\_s4\_12
- FR3246\_c0\_s1\_14
- FR2682\_c0\_s2\_11
- FR2681\_c0\_s1\_15
- FR1847\_c0\_s2\_11
- FR4943\_c1\_s1\_12
- FR4488\_c0\_s2\_12
- FR2247\_c0\_s2\_11
- FR2814\_c0\_s1\_12
- FR3433\_c1\_s2\_12
- FR4253\_c0\_s2\_12
- FR2687\_c1\_s1\_12
- FR2246\_c0\_s2\_11
- FR3268\_c1\_s1\_11
- FR3268\_c1\_s1\_11
- FR2571\_c0\_s2\_11
- FR2682\_c1\_s1\_11
- FR3259\_c0\_s2\_12
- FR3260\_c0\_s1\_12
- FR2774\_c0\_s1\_11
- FR2219\_c0\_s1\_12
- FR2627\_c0\_s1\_11
- FR2220\_c0\_s1\_11
- FR4665\_c0\_s1\_11
- FR4253\_c0\_s1\_11
- FR2681\_c0\_s2\_11
- FR2720\_c0\_s2\_12
- FR2266\_c0\_s1\_12
- FR2682\_c0\_s1\_12
- FR3263\_c1\_s2\_12
- FR3260\_c1\_s2\_12
- FR3260\_c1\_s2\_12
- FR3260\_c1\_s2\_12
- FR3267\_c1\_s2\_11
- FR2161\_c0\_s1\_12
- FR2752\_c1\_s1\_11
- FR2748\_c0\_s1\_12
- FR2681\_c0\_s1\_12
- FR2681\_c0\_s1\_12
- FR2748\_c0\_s1\_11
- FR3263\_c0\_s2\_11
- FR2687\_c0\_s2\_11
- FR4653\_c0\_s1\_14
- FR2682\_c0\_s1\_12
- FR2687\_c1\_s2\_11
- FR2748\_c0\_s1\_11
- FR2748\_c0\_s1\_11
- FR2682\_c0\_s2\_12
- FR2682\_c0\_s1\_12

align-est-C01

align-est-D5