

Quantification

Step #: 3

Analysis Mode: Fluorophore

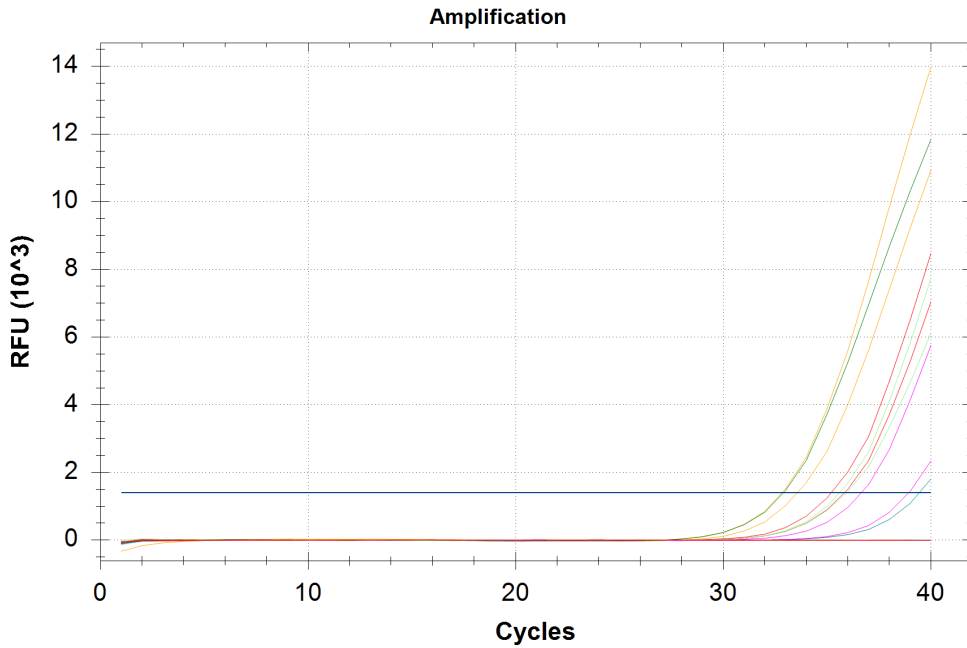
Cq Determination: Single Threshold

Baseline Method:

FAM: Auto Calculated

Threshold Setting:

FAM: 1396.68, User Defined

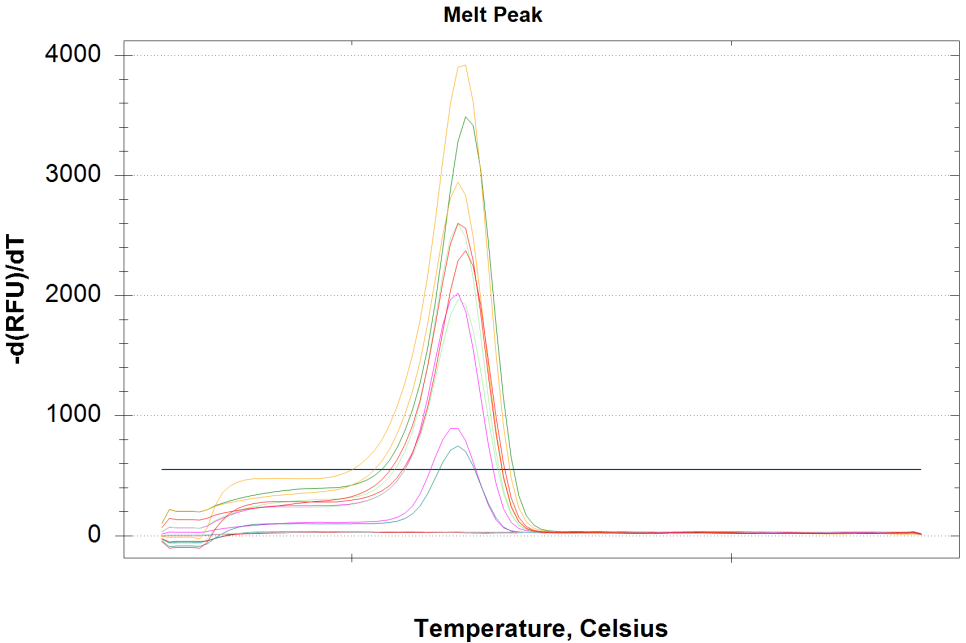
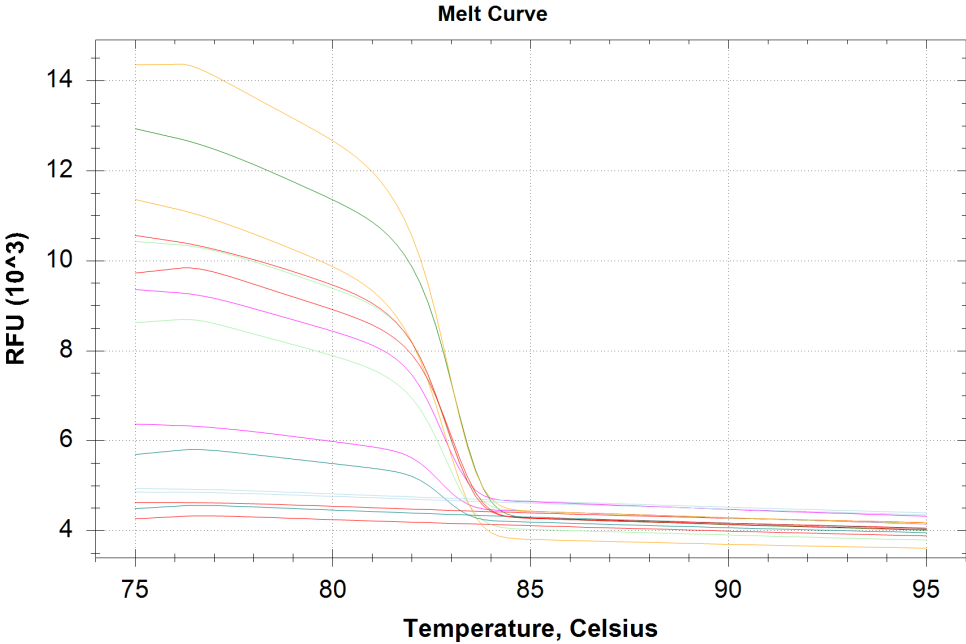


Quantification Data

Well	Fluor	Target	Content	Sample	Cq	Cq Mean	Cq Std. Dev
A01	FAM	VTG	Unkn-1	31H	35.82	35.51	0.444
A02	FAM	VTG	Unkn-1	31H	35.19	35.51	0.444
A03	FAM	VTG	Unkn-2	39H	N/A	0.00	0.000
A04	FAM	VTG	Unkn-2	39H	N/A	0.00	0.000
A05	FAM	VTG	Unkn-3	57H	39.43	39.43	0.000
A06	FAM	VTG	Unkn-3	57H	N/A	0.00	0.000
A07	FAM	VTG	Unkn-4	61H	32.81	33.18	0.523
A08	FAM	VTG	Unkn-4	61H	33.55	33.18	0.523
B01	FAM	VTG	Unkn-5	11-08 1H	35.93	35.76	0.248
B02	FAM	VTG	Unkn-5	11-08 1H	35.58	35.76	0.248
B03	FAM	VTG	Unkn-6	11-08 2H	36.64	37.78	1.618
B04	FAM	VTG	Unkn-6	11-08 2H	38.93	37.78	1.618
B05	FAM	VTG	Pos Ctrl		32.89	32.89	0.000
B06	FAM	VTG	NTC-1		N/A	0.00	0.000
B07	FAM	VTG	NTC-1		N/A	0.00	0.000

Melt Curve

Step #: 5



Melt Curve Data

Well	Fluor	Target	Content	Sample	Melt Temp
A01	FAM	VTG	Unkn-1	31H	83.00
A02	FAM	VTG	Unkn-1	31H	82.80
A03	FAM	VTG	Unkn-2	39H	None
A04	FAM	VTG	Unkn-2	39H	None

Melt Curve Data

Well	Fluor	Target	Content	Sample	Melt Temp
A05	FAM	VTG	Unkn-3	57H	82.80
A06	FAM	VTG	Unkn-3	57H	None
A07	FAM	VTG	Unkn-4	61H	83.00
A08	FAM	VTG	Unkn-4	61H	82.80
B01	FAM	VTG	Unkn-5	11-08 1H	82.80
B02	FAM	VTG	Unkn-5	11-08 1H	82.80
B03	FAM	VTG	Unkn-6	11-08 2H	82.80
B04	FAM	VTG	Unkn-6	11-08 2H	82.80
B05	FAM	VTG	Pos Ctrl		83.00
B06	FAM	VTG	NTC-1		None
B07	FAM	VTG	NTC-1		None

QC Parameters

Data

Description	Value	Use	Results	Exclude Wells	All excluded wells
Negative control with a Cq less than	38	True		False	
NTC with a Cq less than	38	True		False	
NRT with a Cq less than	38	True		False	
Positive control with a Cq greater than	30	True	FAM:B5.	False	
Unknown without a Cq	N/A	True	FAM:A3, A4, A6.	False	
Standard without a Cq	N/A	True		False	
Efficiency greater than	110.0	True			
Efficiency less than	90.0	True			
Std Curve R ² less than	0.980	True			
Replicate group Cq Std Dev greater than	0.20	True	FAM:A1, A2, A7, A8, B1, B2, B3, B4.	False	